

# XRCC1 antibody



Catalog Number: 116872

## Product name

XRCC1 antibody

## Clonality

Polyclonal

## Immunogen

[Human XRCC1 Recombinant protein \(His tag\)](#)

## Ig Type

Rabbit IgG

## Specificity

Human; other species not tested.

## Applications

ELISA, WB

## Antibody description

XRCC1 Rabbit Polyclonal antibody. Positive WB detected in K-562 cells, HEK-293 cells, HeLa cells, Jurkat cells. Observed molecular weight by Western-blot: 80-90 kDa

## Dilutions

Recommended Dilution:  
WB: 1:200-1:2000

## Preparation

This antibody was obtained by immunization of XRCC1 recombinant protein (Accession Number: NM\_006297). Purification method: Antigen affinity purified.

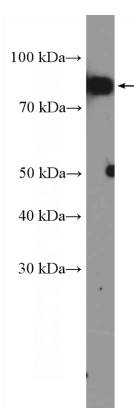
## Validations

## Formulation

PBS with 0.1% sodium azide and 50% glycerol pH 7.3.

## Storage

Store at -20°C. DO NOT ALIQUOT



K-562 cells were subjected to SDS PAGE followed by western blot with Catalog No:116872(XRCC1 Antibody) at dilution of 1:600