

MAP1B antibody



Catalog Number: 112472

Product name

MAP1B antibody

Immunogen

[Human MAP1B Recombinant protein \(GST tag & His tag\)](#)

Specificity

Human, Mouse; other species not tested.

Antibody description

MAP1B Rabbit Polyclonal antibody. Positive WB detected in mouse cerebellum tissue, human brain tissue. Positive FC detected in SH-SY5Y cells. Positive IHC detected in mouse brain tissue. Positive IF detected in SH-SY5Y cells. Observed molecular weight by Western-blot: 320kd

Preparation

This antibody was obtained by immunization of MAP1B recombinant protein (Accession Number: BC141853). Purification method: Antigen affinity purified.

Formulation

PBS with 0.1% sodium azide and 50% glycerol pH 7.3.

Storage

Store at -20°C. DO NOT ALIQUOT

Clonality

Polyclonal

Ig Type

Rabbit IgG

Applications

ELISA, WB, IHC, FC, IF

Dilutions

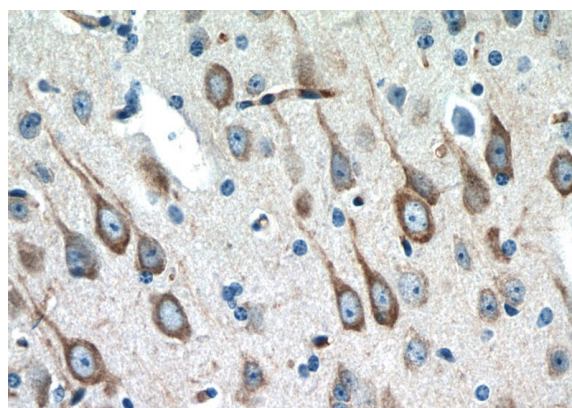
Recommended Dilution:

WB: 1:200-1:2000

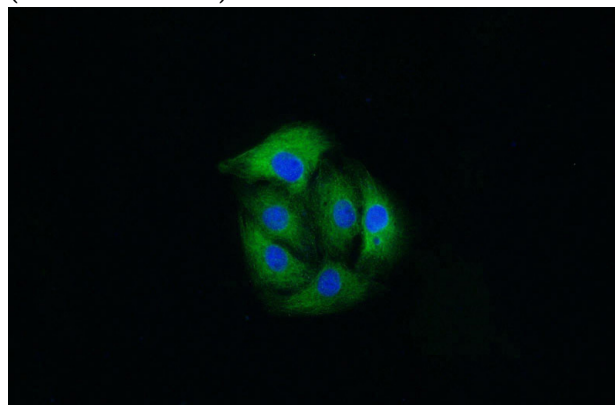
IHC: 1:20-1:200

IF: 1:10-1:100

Validations



Immunohistochemistry of paraffin-embedded mouse brain tissue slide using Catalog No:112472(MAP1B Antibody) at dilution of 1:50 (under 40x lens)

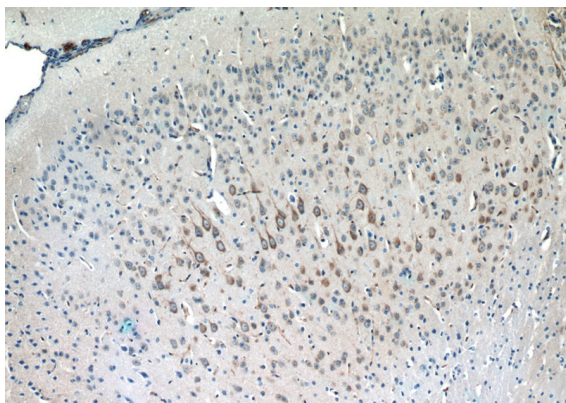


Immunofluorescent analysis of SH-SY5Y cells using Catalog No:112472(MAP1B Antibody) at dilution of 1:25 and Alexa Fluor 488-conjugated AffiniPure Goat Anti-Rabbit IgG(H+L)

MAP1B antibody

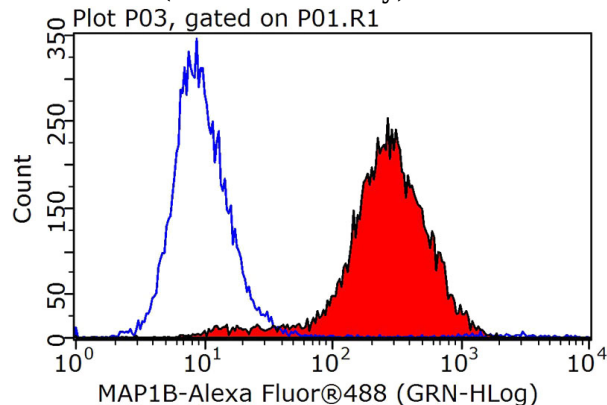


Catalog Number: 112472



Immunohistochemistry of paraffin-embedded mouse brain tissue slide using Catalog No:112472(MAP1B Antibody) at dilution of 1:50

mouse cerebellum tissue were subjected to SDS PAGE followed by western blot with Catalog No:112472(MAP1B antibody) at dilution of 1:500



1X10⁶ SH-SY5Y cells were stained with 0.2ug MAP1B antibody (Catalog No:112472, red) and control antibody (blue). Fixed with 90% MeOH blocked with 3% BSA (30 min). Alexa Fluor 488-conjugated AffiniPure Goat Anti-Rabbit IgG(H+L) with dilution 1:1000.

