

# Fibulin-1 antibody



Catalog Number: 110662

## Product name

Fibulin-1 antibody

## Specificity

Human, Mouse, Rat; other species not tested.

## Antibody description

Fibulin-1 Rabbit Polyclonal antibody. Positive WB detected in human brain tissue, human placenta tissue. Observed molecular weight by Western-blot: 72-74kd

## Preparation

This antibody was obtained by immunization of Fibulin-1 recombinant protein (Accession Number: NM\_001996). Purification method: Antigen affinity purified.

## Formulation

PBS with 0.02% sodium azide and 50% glycerol pH 7.3.

## Storage

Store at -20°C. DO NOT ALIQUOT

## Clonality

Polyclonal

## Ig Type

Rabbit IgG

## Applications

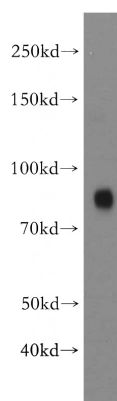
ELISA, WB

## Dilutions

Recommended Dilution:

WB: 1:500-1:5000

## Validations



human brain tissue were subjected to SDS PAGE followed by western blot with Catalog No:110662(FBLN1 antibody) at dilution of 1:500