

# Anti-ATG4C Rabbit antibody



Catalog Number: 166752

## Product name

Anti-ATG4C Rabbit antibody

WB: 1/1000

IHC: 1/50

## Specificity

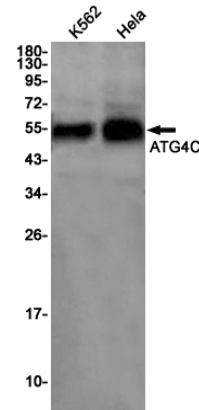
Human

FC: 1/20

## Antibody description

ATG4C Rabbit polyclonal antibody

## Validations



## Preparation

Antigen: Recombinant protein of human ATG4C

## Formulation

Supplied in 50nM Tris-Glycine(pH 7.4), 0.15M NaCl, 40%Glycerol, 0.01% sodium azide and 0.05% BSA.

## Storage

Store at -20°C. Stable for 12 months from date of receipt.

## Clonality

Polyclonal

## Ig Type

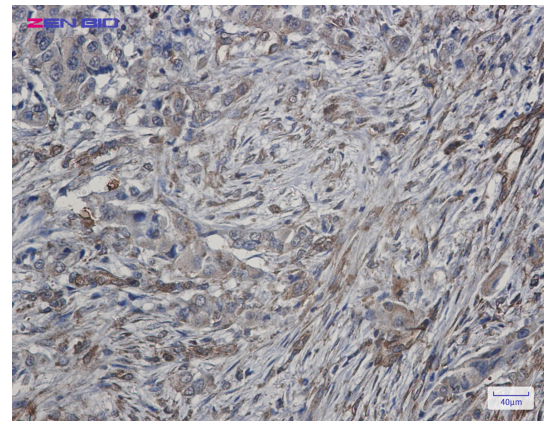
Rabbit IgG

## Applications

WB, IHC-P, FC

## Dilutions

Western blot detection of ATG4C in K562,HeLa cell lysates using ATG4C Rabbit pAb(1:1000 diluted).Predicted band size:53kDa.Observed band size:53kDa.



Immunohistochemistry of ATG4C in paraffin-embedded Human lung cancer tissue using ATG4C Rabbit pAb at dilution 1/50