

PSMG3 antibody



Catalog Number: 114252

Product name

PSMG3 antibody

Immunogen

[Human PSMG3 Recombinant protein \(GST tag & His tag\)](#)

Specificity

Human, Mouse, Rat; other species not tested.

Antibody description

PSMG3 Rabbit Polyclonal antibody. Positive IHC detected in human stomach cancer tissue, human liver cancer tissue. Observed molecular weight by Western-blot: 13-18 kDa

Preparation

This antibody was obtained by immunization of PSMG3 recombinant protein (Accession Number: NM_032302). Purification method: Antigen affinity purified.

Formulation

PBS with 0.1% sodium azide and 50% glycerol pH 7.3.

Storage

Store at -20°C. DO NOT ALIQUOT

Clonality

Polyclonal

Ig Type

Rabbit IgG

Applications

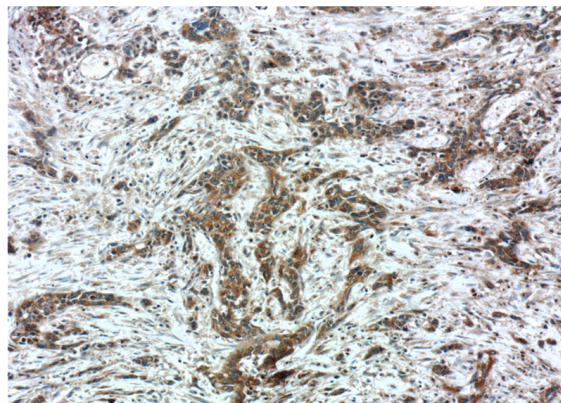
ELISA, IHC

Dilutions

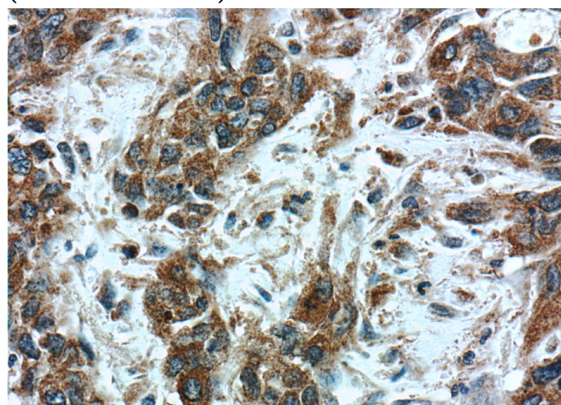
Recommended Dilution:

IHC: 1:20-1:200

Validations



Immunohistochemistry of paraffin-embedded human stomach cancer tissue slide using Catalog No:114252(PSMG3 Antibody) at dilution of 1:50 (under 10x lens)



Immunohistochemistry of paraffin-embedded human stomach cancer tissue slide using Catalog No:114252(PSMG3 Antibody) at dilution of 1:50 (under 40x lens)