

# S100 beta antibody



Catalog Number: 114952

## Product name

S100 beta antibody

WB: 1:500-1:5000

IHC: 1:20-1:200

## Specificity

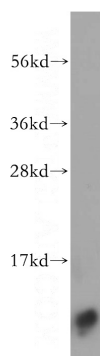
Human, Mouse, Rat; other species not tested.

IF: 1:10-1:100

## Validations

## Antibody description

S100 beta Rabbit Polyclonal antibody. Positive IF detected in A375 cells. Positive IHC detected in human skin cancer tissue, human breast cancer tissue, human gliomas tissue. Positive WB detected in human testis tissue, A375 cells, human brain tissue, mouse brain tissue. Observed molecular weight by Western-blot: 11 kDa



## Preparation

This antibody was obtained by immunization of S100 beta recombinant protein (Accession Number: NM\_006272). Purification method: Antigen affinity purified.

human testis tissue were subjected to SDS PAGE followed by western blot with Catalog No:114952(S100B antibody) at dilution of 1:400

## Formulation

PBS with 0.02% sodium azide and 50% glycerol pH 7.3.

## Storage

Store at -20°C. DO NOT ALIQUOT

## Clonality

Polyclonal

## Ig Type

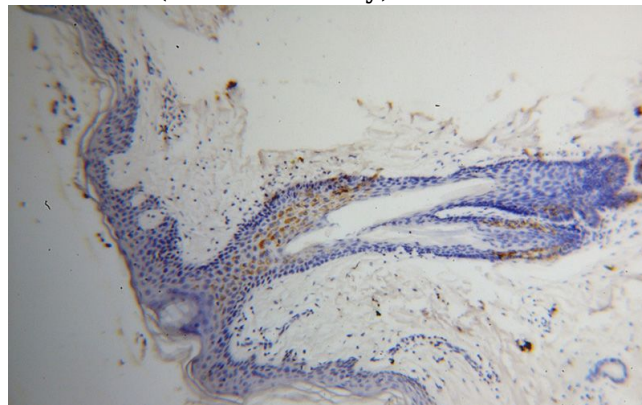
Rabbit IgG

## Applications

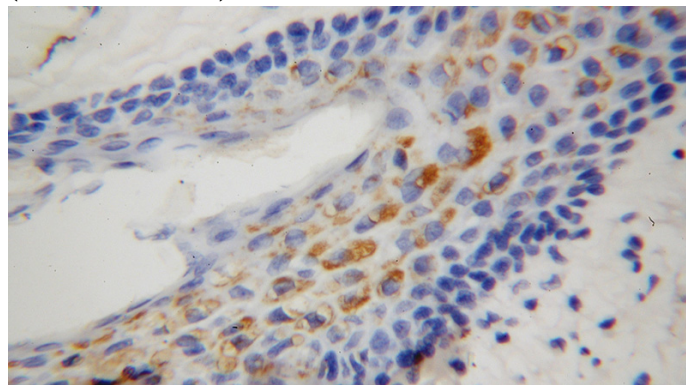
ELISA, WB, IHC, IF

## Dilutions

Recommended Dilution:



Immunohistochemical of paraffin-embedded human skin cancer using Catalog No:114952(S100B antibody) at dilution of 1:100 (under 10x lens)



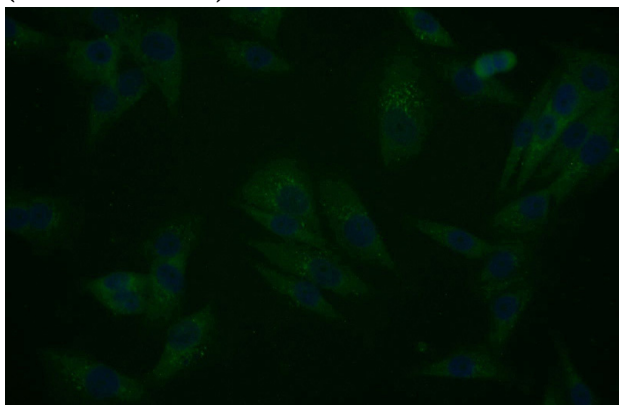
# S100 beta antibody



Catalog Number: 114952

---

Immunohistochemical of paraffin-embedded human skin cancer using Catalog No:114952(S100B antibody) at dilution of 1:100 (under 40x lens)



Immunofluorescent analysis of A375 cells using Catalog No:114952(S100B Antibody) at dilution of 1:25 and Alexa Fluor 488-conjugated AffiniPure Goat Anti-Rabbit IgG(H+L)