

# PLDN antibody



Catalog Number: 113952

## Product name

PLDN antibody

## Immunogen

[Human PLDN Recombinant protein \(GST tag & His tag\)](#)

## Specificity

Human, Mouse, Rat; other species not tested.

## Antibody description

PLDN Rabbit Polyclonal antibody. Positive IHC detected in human breast cancer tissue. Positive IP detected in K-562 cells. Positive WB detected in K-562 cells, HeLa cells, human brain tissue, human heart tissue, mouse thymus tissue. Observed molecular weight by Western-blot: 25kd

## Preparation

This antibody was obtained by immunization of PLDN recombinant protein (Accession Number: NM\_012388). Purification method: Antigen affinity purified.

## Formulation

PBS with 0.1% sodium azide and 50% glycerol pH 7.3.

## Storage

Store at -20°C. DO NOT ALIQUOT

## Clonality

Polyclonal

## Ig Type

Rabbit IgG

## Applications

ELISA, WB, IHC, IP

## Dilutions

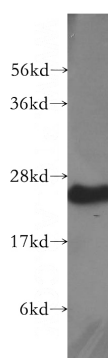
Recommended Dilution:

WB: 1:200-1:2000

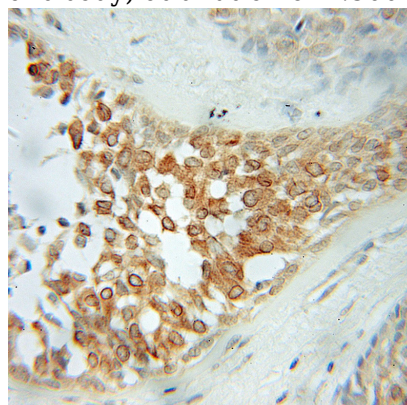
IP: 1:200-1:2000

IHC: 1:20-1:200

## Validations



K-562 cells were subjected to SDS PAGE followed by western blot with Catalog No:113952(PLDN antibody) at dilution of 1:500

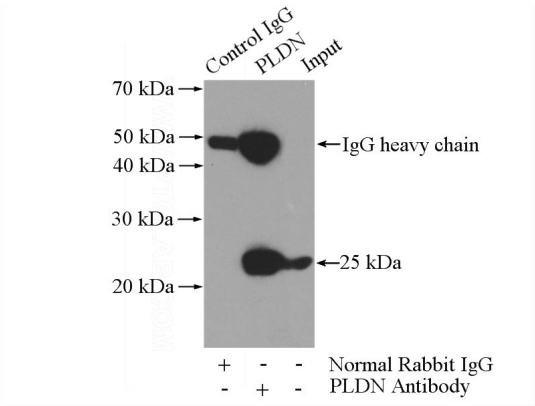


Immunohistochemical of paraffin-embedded human breast cancer using Catalog No:113952(PLDN antibody) at dilution of 1:50 (under 10x lens)

# PLDN antibody



Catalog Number: 113952



IP Result of anti-PLDN (IP:Catalog No:113952, 3ug; Detection:Catalog No:113952 1:500) with K-562 cells lysate 3600ug.