

# MCM2 antibody



Catalog Number: 112552

## Product name

MCM2 antibody

## Immunogen

[Human MCM2 Recombinant protein \(GST tag & His tag\)](#)

## Specificity

Human, Mouse, Rat; other species not tested.

## Antibody description

MCM2 Rabbit Polyclonal antibody. Positive WB detected in K-562 cells, HEK-293 cells, HeLa cells, PC-3 cells. Positive IP detected in HEK-293 cells. Positive IHC detected in human tonsillitis tissue, human placenta tissue. Observed molecular weight by Western-blot: 116-125 kDa

## Preparation

This antibody was obtained by immunization of MCM2 recombinant protein (Accession Number: NM\_004526). Purification method: Antigen affinity purified.

## Formulation

PBS with 0.1% sodium azide and 50% glycerol pH 7.3.

## Storage

Store at -20°C. DO NOT ALIQUOT

## Clonality

Polyclonal

## Ig Type

Rabbit IgG

## Applications

ELISA, WB, IHC, IP

## Dilutions

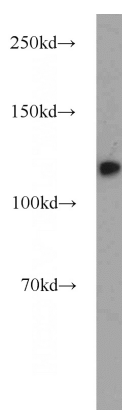
Recommended Dilution:

WB: 1:200-1:2000

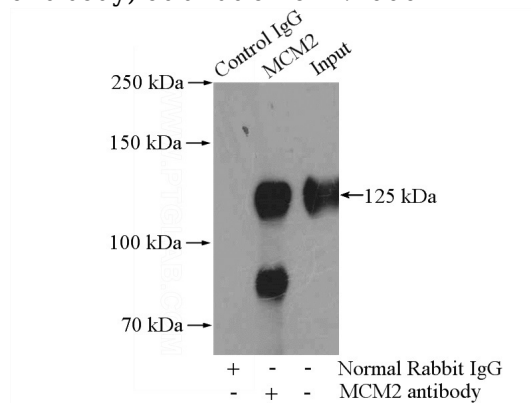
IP: 1:200-1:2000

IHC: 1:20-1:200

## Validations



K-562 cells were subjected to SDS PAGE followed by western blot with Catalog No:112552(MCM2 antibody) at dilution of 1:1000

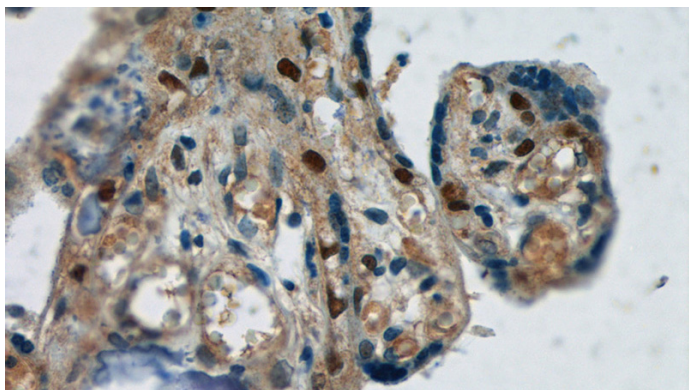


IP Result of anti-MCM2 (IP:Catalog No:112552, 4ug; Detection:Catalog No:112552 1:800) with HEK-293 cells lysate 2800ug.

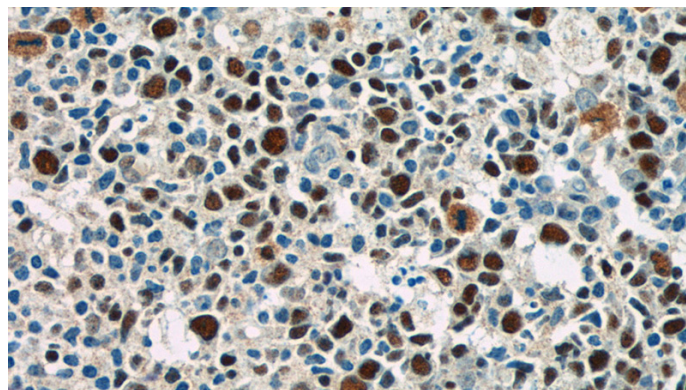
# MCM2 antibody

Catalog Number: 112552

---



Immunohistochemistry of paraffin-embedded human placenta tissue slide using Catalog No:112552(MCM2 Antibody) at dilution of 1:50 (under 40x lens)



Immunohistochemistry of paraffin-embedded human tonsillitis tissue slide using Catalog No:112552(MCM2 Antibody) at dilution of 1:50 (under 40x lens)