

Anti-DIS3L2 antibody



Catalog Number: 175052

Product name

Anti-DIS3L2 antibody

Specificity

Human

Antibody description

Mouse monoclonal antibody to DIS3L2

Preparation

This antigen of this antibody was recombinant protein

Formulation

Liquid, 1*TBS (pH7.4), 1%BSA, 40%Glycerol.
Preservative: 0.05% Sodium Azide.

Storage

Store at +4°C after thawing. Aliquot store at -20°C or -80°C. Avoid repeated freeze / thaw cycles.

Clonality

Monoclonal

Ig Type

Mouse IgG1

Applications

WB, IHC-P, FC

Dilutions

WB: 1:500-1:1,000

IHC-P: 1:50-1:200

FC: 1:100-1:200

Validations

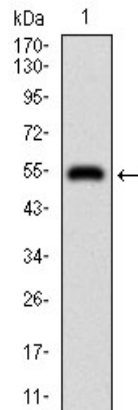
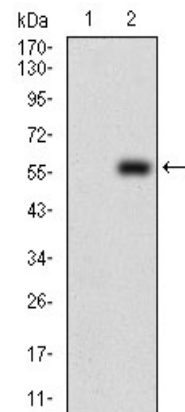
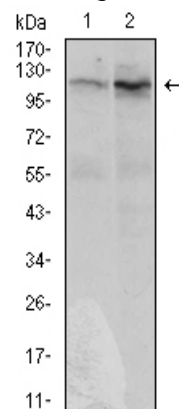


Fig1: Western blot analysis of DIS3L2 on human DIS3L2 recombinant protein using anti-DIS3L2



antibody at 1/1,000 dilution.

Fig2: Western blot analysis of DIS3L2 on HEK293 (1) and DIS3L2-hIgGfc transfected HEK293 (2) cell lysate using anti-DIS3L2 antibody at 1/1,000



dilution.

Fig3: Western blot analysis of DIS3L2 on HeLa (1) and HepG2 (2) cell lysate using anti-DIS3L2 antibody at 1/1,000 dilution.

Anti-DIS3L2 antibody

Catalog Number: 175052

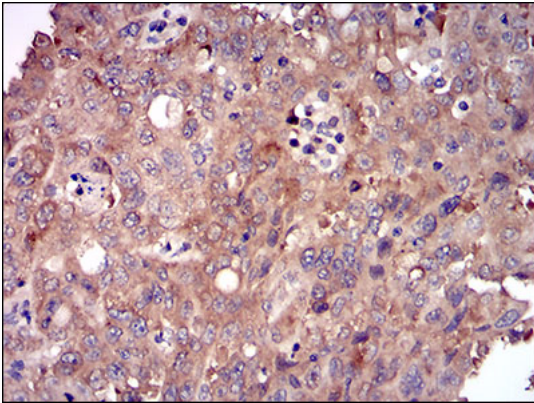


Fig4: Immunohistochemical analysis of paraffin-embedded human endometrial cancer tissue using anti-DIS3L2 antibody. Counter stained with hematoxylin.

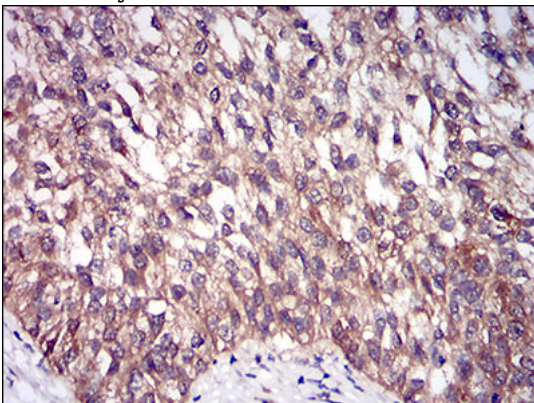


Fig5: Immunohistochemical analysis of paraffin-embedded human bladder cancer tissue using anti-DIS3L2 antibody. Counter stained with hematoxylin.

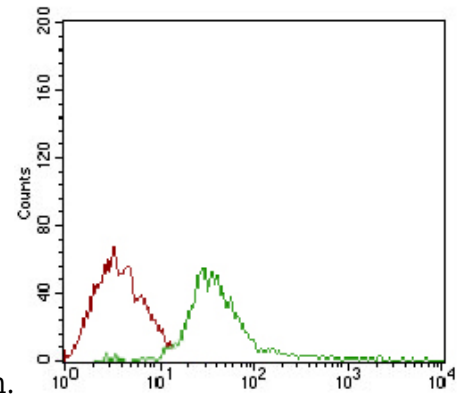


Fig6: Flow cytometric analysis of Jurkat cells with DIS3L2 antibody at 1/100 dilution (green) compared with an unlabelled control (cells without incubation with primary antibody; red).