

Product name

RWDD3 antibody

Immunogen

[Human RWDD3 Recombinant protein \(His tag\)](#)

Specificity

Human; other species not tested.

Antibody description

RWDD3 Rabbit Polyclonal antibody. Positive IHC detected in human liver tissue, human heart tissue.

Preparation

This antibody was obtained by immunization of RWDD3 recombinant protein (Accession Number: NM_001278247). Purification method: Antigen affinity purified.

Formulation

PBS with 0.02% sodium azide and 50% glycerol pH 7.3.

Storage

Store at -20°C. DO NOT ALIQUOT

Clonality

Polyclonal

Ig Type

Rabbit IgG

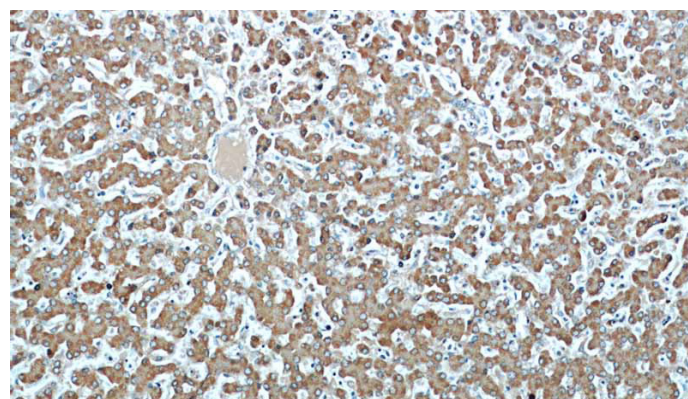
Applications

ELISA, IHC

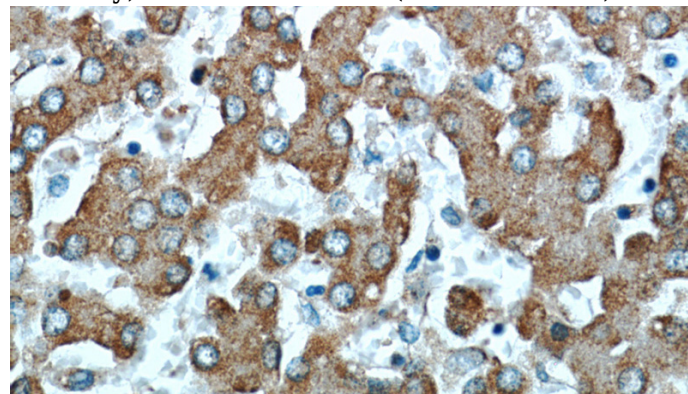
Dilutions

Recommended Dilution:

IHC: 1:20-1:200

Validations

Immunohistochemical of paraffin-embedded human liver using Catalog No:114942(RWDD3 antibody) at dilution of 1:50 (under 10x lens)



Immunohistochemical of paraffin-embedded human liver using Catalog No:114942(RWDD3 antibody) at dilution of 1:50 (under 40x lens)