

# BTG2 antibody



Catalog Number: 108542

## Product name

BTG2 antibody

Recommended Dilution:

WB: 1:500-1:5000

## Immunogen

IHC: 1:20-1:200

[Human BTG2 Recombinant protein \(GST tag & His tag\)](#)

## Validations

## Specificity

Human; other species not tested.

## Antibody description

BTG2 Rabbit Polyclonal antibody. Positive WB detected in Transfected HEK-293 cells. Positive IHC detected in human small intestine tissue, human kidney tissue.

## Preparation

This antibody was obtained by immunization of BTG2 recombinant protein (Accession Number: NM\_006763). Purification method: Antigen affinity purified.

## Formulation

PBS with 0.02% sodium azide and 50% glycerol pH 7.3.

## Storage

Store at -20°C. DO NOT ALIQUOT

## Clonality

Polyclonal

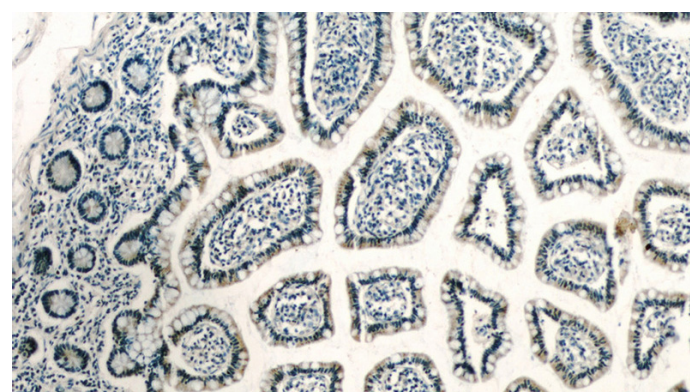
## Ig Type

Rabbit IgG

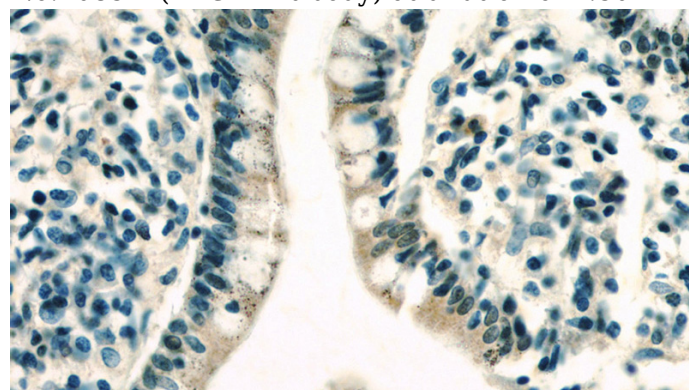
## Applications

ELISA, IHC, WB

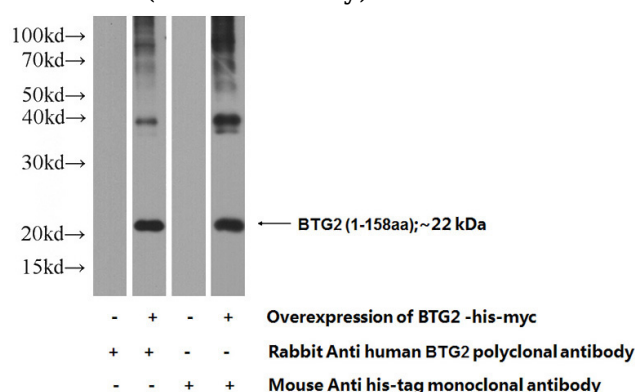
## Dilutions



Immunohistochemistry of paraffin-embedded human small intestine slide using Catalog No:108542(BTG2 Antibody) at dilution of 1:50



Immunohistochemistry of paraffin-embedded human small intestine slide using Catalog No:108542(BTG2 Antibody) at dilution of 1:50



Transfected HEK-293 cells were subjected to SDS

# BTG2 antibody



Catalog Number: 108542

---

PAGE followed by western blot with Catalog

No:108542(BTG2 Antibody) at dilution of 1:1000