

Anti-Phospho-PTEN (Ser380/Thr382/383) Rabbit antibody



Catalog Number: 167142

Product name

Anti-Phospho-PTEN (Ser380/Thr382/383) Rabbit antibody

Specificity

Human, Mouse, Rat

Antibody description

Phospho-PTEN (Ser380/Thr382/383) Rabbit polyclonal antibody

Preparation

Antigen: Peptide sequence around phosphorylation site of threonine 380/382/383 (R-Y-S(p)-D-T(p)-T(p)-D-S) derived from Human PTEN.

Formulation

Supplied at 1.0mg/mL in phosphate buffered saline (without Mg²⁺ and Ca²⁺), pH 7.4, 150mM NaCl, 0.02% sodium azide and 50% glycerol.

Storage

Store at 4°C short term. Store at -20°C long term. Avoid freeze / thaw cycle.

Clonality

Polyclonal

Ig Type

Rabbit IgG

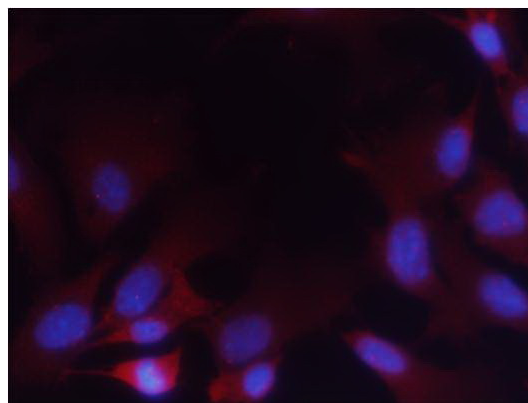
Applications

WB, IHC-P, ICC/IF

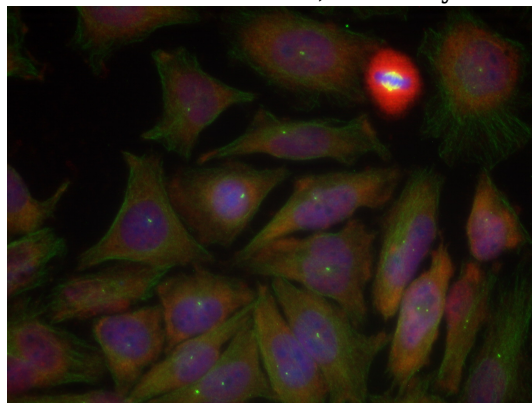
Dilutions

WB:1/500-1/1000 ICC:1/100-1/200 IHC:1/50-1/100

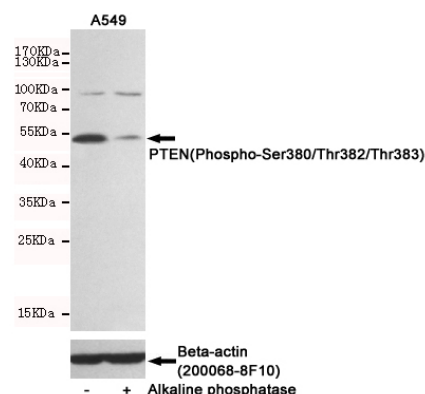
Validations



Immunofluorescence staining of methanol-fixed MEF cells using PTEN (Phospho-Ser380/Thr382/Thr383) Antibody .



Immunofluorescence staining of methanol-fixed HeLa cells using PTEN (Phospho-Ser380/Thr382/Thr383) Antibody .

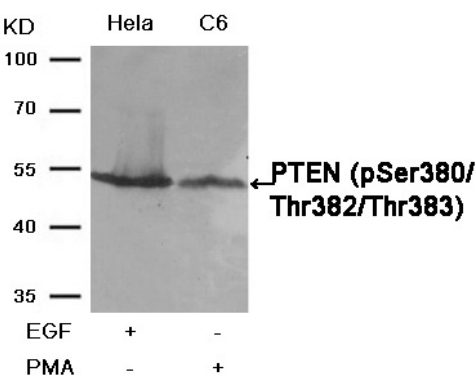


Western blot detection of PTEN(Phospho-Ser380/Thr382/Thr383) in A549 cells untreated or treated with Alkaline phosphatase using PTEN(Phospho-Ser380/Thr382/Thr383) Rabbit pAb (dilution 1:1000, upper) or u03b2-Actin Mouse mAb (200068-8F10, lower). Predicted band size:54kDa. Observed band size:54kDa.

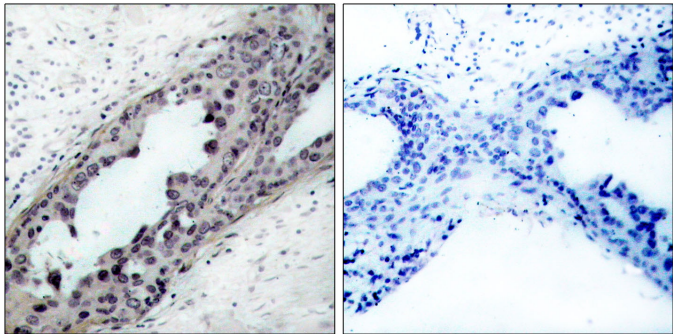
Anti-Phospho-PTEN (Ser380/Thr382/383) Rabbit antibody



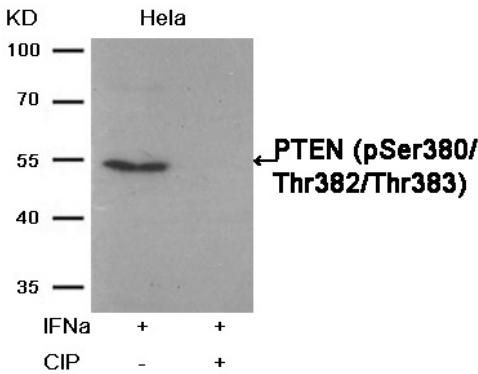
Catalog Number: 167142



Western blot analysis of extracts from HeLa and C6 cells, treated with EGF or PMA, using PTEN (Phospho-Ser380/Thr382/Thr383) Antibody .



Immunohistochemical analysis of paraffin-embedded human breast carcinoma tissue, using PTEN (Phospho-Ser380/Thr382/Thr383) Antibody (left) or the same antibody preincubated with blocking peptide (right).



Western blot analysis of extracts from HeLa cells, treated with IFNa or calf intestinal phosphatase (CIP), using PTEN (Phospho-Ser380/Thr382/Thr383) Antibody .