

# Anti-Phospho-p38 (Thr180) Rabbit antibody



Catalog Number: 166732

## Product name

Anti-Phospho-p38 (Thr180) Rabbit antibody

## Ig Type

Rabbit IgG

## Specificity

Human

## Applications

WB, FC

## Antibody description

Phospho-p38 (Thr180) Rabbit polyclonal antibody

## Dilutions

WB: 1/1000

## Preparation

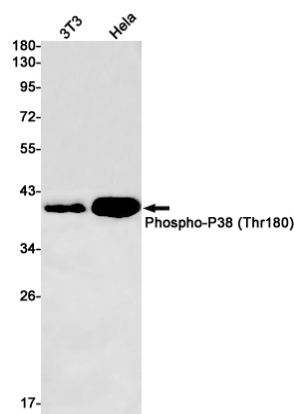
Antigen: A synthetic phosphopeptide corresponding to residues surrounding Thr180 of human p38

FC: 1/50

## Formulation

Supplied in 50nM Tris-Glycine(pH 7.4), 0.15M NaCl, 40%Glycerol, 0.01% sodium azide and 0.05% BSA.

## Validations



## Storage

Store at -20°C. Stable for 12 months from date of receipt.

## Clonality

Polyclonal

Western blot detection of Phospho-P38 (Thr180) in 3T3, HeLa cell lysates using Phospho-P38 (Thr180) Rabbit pAb(1:1000 diluted). Predicted band size: 41kDa. Observed band size: 41kDa.