

RNASEL antibody



Catalog Number: 114732

Product name

RNASEL antibody

IHC: 1:20-1:200

IF: 1:10-1:100

Specificity

Human, Rat, Mouse; other species not tested.

Antibody description

RNASEL Rabbit Polyclonal antibody. Positive WB detected in RAW 264.7 cells. Positive IF detected in HepG2 cells. Positive IHC detected in human tonsillitis tissue, human spleen tissue. Observed molecular weight by Western-blot: 84 kDa

Preparation

This antibody was obtained by immunization of RNASEL recombinant protein (Accession Number: NM_021133). Purification method: Antigen Affinity purified.

Formulation

PBS with 0.02% sodium azide and 50% glycerol pH 7.3.

Storage

Store at -20°C. DO NOT ALIQUOT

Clonality

Polyclonal

Ig Type

Rabbit IgG

Applications

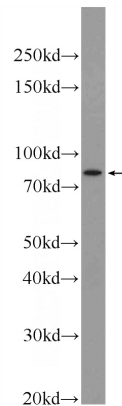
ELISA, WB, IF, IHC

Dilutions

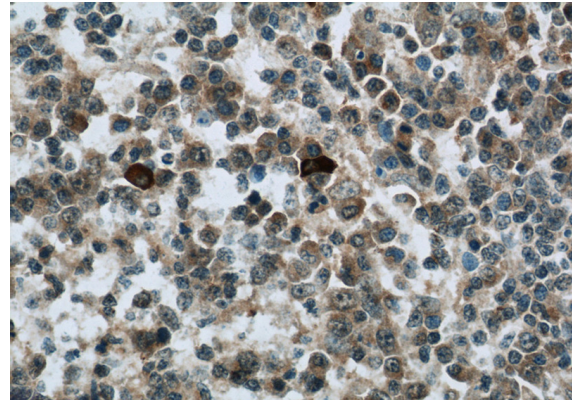
Recommended Dilution:

WB: 1:200-1:2000

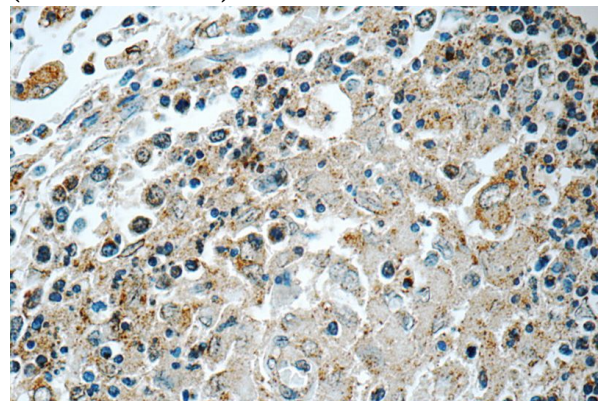
Validations



RAW 264.7 cells were subjected to SDS PAGE followed by western blot with Catalog No:114732(RNASEL Antibody) at dilution of 1:600

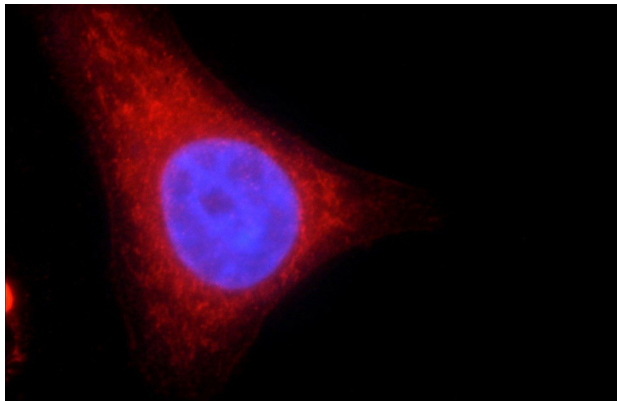


Immunohistochemistry of paraffin-embedded human tonsillitis tissue slide using Catalog No:114732(RNASEL Antibody) at dilution of 1:50 (under 40x lens)



Immunohistochemistry of paraffin-embedded

human spleen tissue slide using Catalog No:114732(RNASEL Antibody) at dilution of 1:50 (under 40x lens)



Immunofluorescent analysis of HepG2 cells using Catalog No:114732(RNASEL Antibody) at dilution of 1:25 and Rhodamine-Goat anti-Rabbit IgG