

CHMP1B antibody



Catalog Number: 109232

Product name

CHMP1B antibody

Recommended Dilution:

WB: 1:200-1:2000

Immunogen

IP: 1:200-1:1000

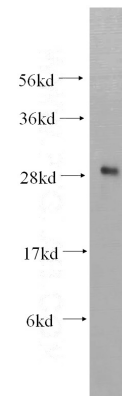
[Human CHMP1B Recombinant protein \(GST tag & His tag\)](#)

IHC: 1:20-1:200

Specificity

Human, Mouse, Rat; other species not tested.

Validations



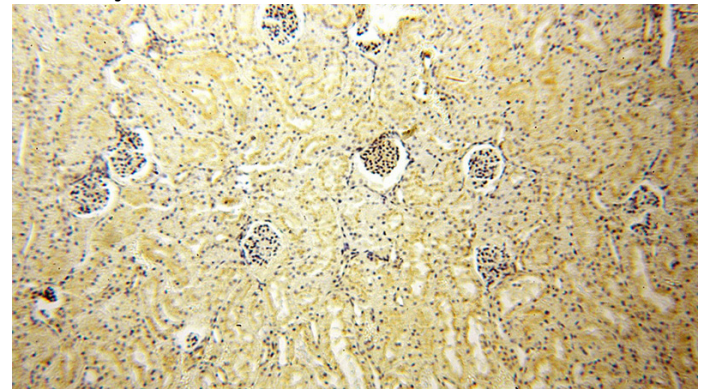
Antibody description

CHMP1B Rabbit Polyclonal antibody. Positive IHC detected in human kidney tissue. Positive IP detected in HeLa cells. Positive WB detected in HeLa cells, A431 cells. Observed molecular weight by Western-blot: 28 kDa

Preparation

This antibody was obtained by immunization of CHMP1B recombinant protein (Accession Number: NM_020412). Purification method: Antigen affinity purified.

HeLa cells were subjected to SDS PAGE followed by western blot with Catalog No:109232(CHMP1B antibody) at dilution of 1:300



Formulation

PBS with 0.02% sodium azide and 50% glycerol pH 7.3.

Storage

Store at -20°C. DO NOT ALIQUOT

Clonality

Polyclonal

Ig Type

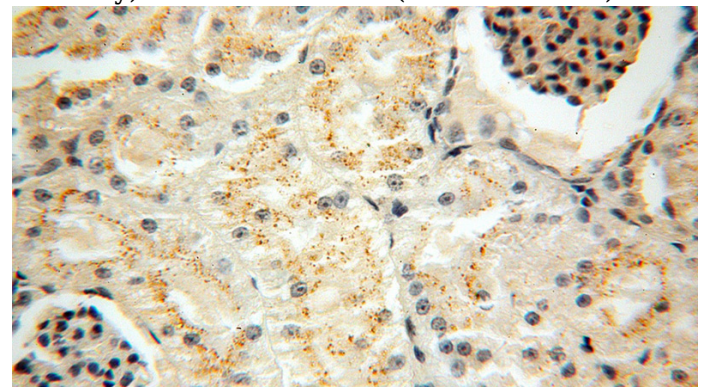
Rabbit IgG

Applications

ELISA, WB, IHC, IP

Dilutions

Immunohistochemical of paraffin-embedded human kidney using Catalog No:109232(CHMP1B antibody) at dilution of 1:50 (under 10x lens)



CHMP1B antibody



Catalog Number: 109232

Immunohistochemical of paraffin-embedded human kidney using Catalog No:109232(CHMP1B antibody) at dilution of 1:50 (under 40x lens)

IP Result of anti-CHMP1B (IP:Catalog No:109232, 4ug; Detection:Catalog No:109232 1:300) with HeLa cells lysate 880ug.

