

ASMTL antibody

Catalog Number: 108232

Product name

ASMTL antibody

IHC: 1:20-1:200

IF: 1:20-1:200

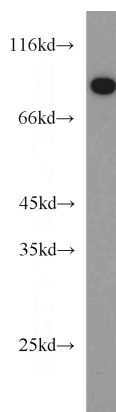
Specificity

Human; other species not tested.

Validations

Antibody description

ASMTL Rabbit Polyclonal antibody. Positive IF detected in A549 cells. Positive IHC detected in human prostate cancer tissue. Positive WB detected in human testis tissue, A549 cells, HeLa cells, HL-60 cells, L02 cells. Observed molecular weight by Western-blot: 69-75 kDa



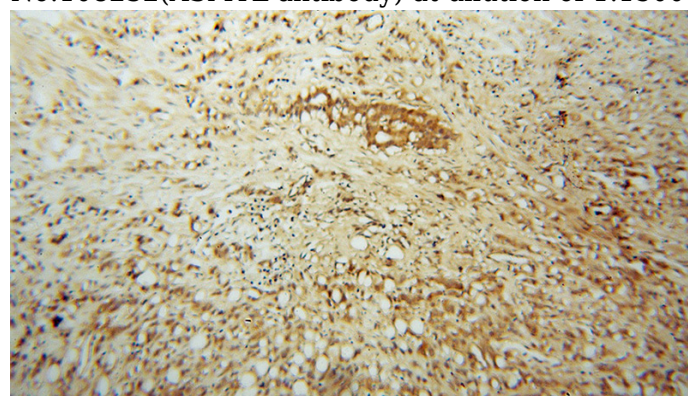
Preparation

This antibody was obtained by immunization of ASMTL recombinant protein (Accession Number: NM_004192). Purification method: Antigen affinity purified.

human testis tissue were subjected to SDS PAGE followed by western blot with Catalog No:108232(ASMTL antibody) at dilution of 1:1500

Formulation

PBS with 0.02% sodium azide and 50% glycerol pH 7.3.



Storage

Store at -20°C. DO NOT ALIQUOT

Clonality

Polyclonal

Immunohistochemical of paraffin-embedded human prostate cancer using Catalog No:108232(ASMTL antibody) at dilution of 1:100 (under 10x lens)

Ig Type

Rabbit IgG

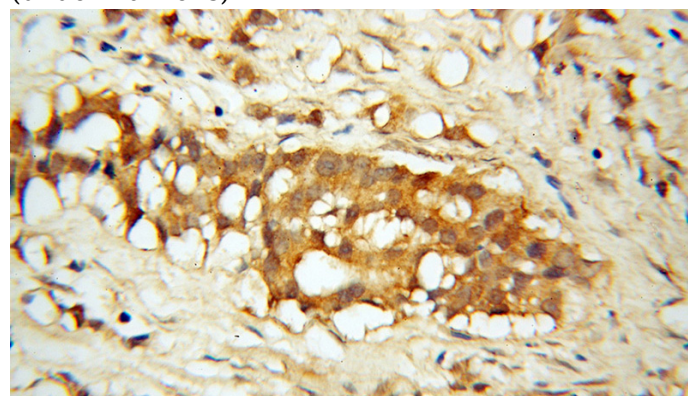
Applications

ELISA, WB, IHC, IF

Dilutions

Recommended Dilution:

WB: 1:500-1:5000

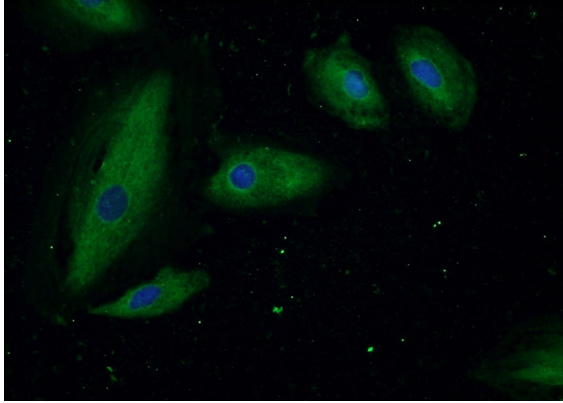


Immunohistochemical of paraffin-embedded

ASMTL antibody

Catalog Number: 108232

human prostate cancer using Catalog No:108232(ASMTL antibody) at dilution of 1:100 (under 40x lens)



Immunofluorescent analysis of A549 cells using Catalog No:108232(ASMTL Antibody) at dilution of 1:50 and Alexa Fluor 488-conjugated AffiniPure Goat Anti-Rabbit IgG(H+L)