

Calnexin antibody



Catalog Number: 108832

Product name

Calnexin antibody

Recommended Dilution:

WB: 1:200-1:2000

Specificity

Human, Mouse, Rat; other species not tested.

IHC: 1:20-1:200

IF: 1:20-1:200

Antibody description

Calnexin Rabbit Polyclonal antibody. Positive FC detected in HeLa cells. Positive IHC detected in human breast cancer tissue, human cervical cancer tissue. Positive IF detected in A431 cells, HeLa cells. Positive WB detected in mouse brain tissue, A375 cells, A431 cells, HeLa cells, Jurkat cells, K-562 cells, MCF7 cells, NIH/3T3 cells. Observed molecular weight by Western-blot: 90 kDa

Preparation

This antibody was obtained by immunization of Calnexin recombinant protein (Accession Number: XM_047417792). Purification method: Antigen affinity purified.

Formulation

PBS with 0.1% sodium azide and 50% glycerol pH 7.3.

Storage

Store at -20°C. DO NOT ALIQUOT

Clonality

Polyclonal

Ig Type

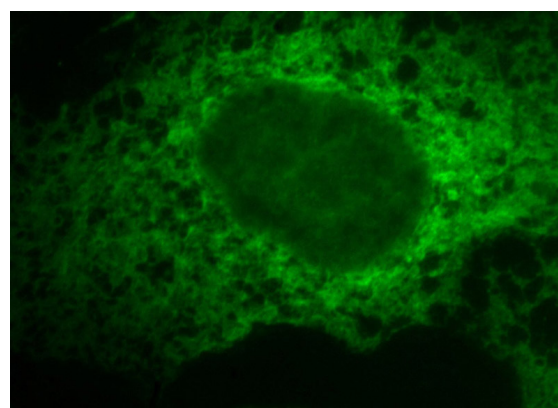
Rabbit IgG

Applications

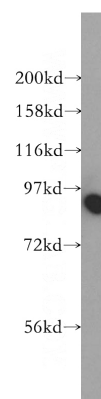
ELISA, WB, IHC, IF, FC

Dilutions

Validations



Immunofluorescent analysis of A431 cells, using CANX antibody Catalog No:108832 at 1:50 dilution and FITC-labeled donkey anti-rabbit

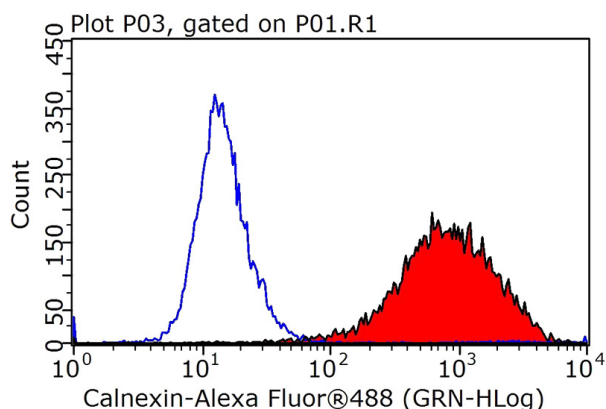


IgG(green).

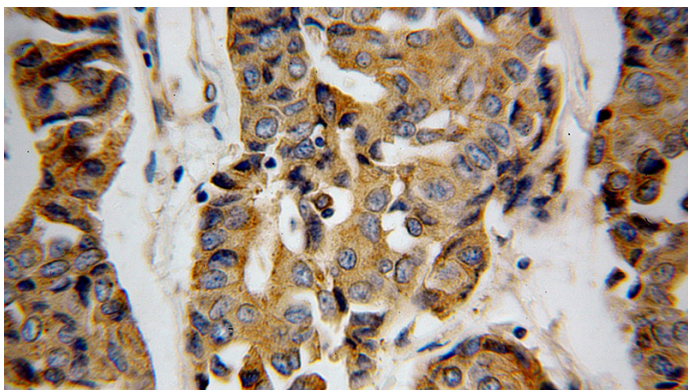
mouse brain tissue were subjected to SDS PAGE followed by western blot with Catalog No:108832(CANX antibody) at dilution of 1:400

Calnexin antibody

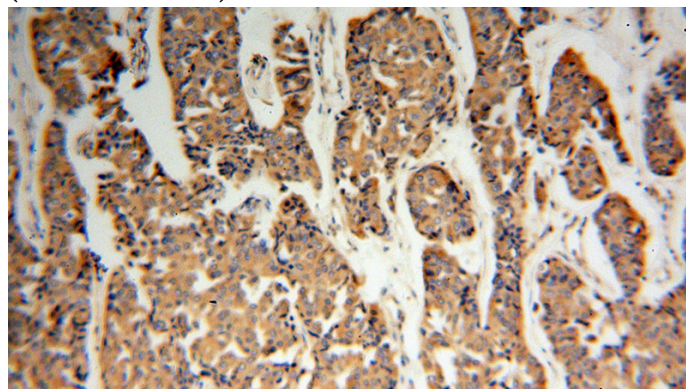
Catalog Number: 108832



1X10⁶ HeLa cells were stained with 0.2ug Calnexin antibody (Catalog No:108832, red) and control antibody (blue). Fixed with 90% MeOH blocked with 3% BSA (30 min). Alexa Fluor 488-conjugated AffiniPure Goat Anti-Rabbit IgG(H+L) with dilution 1:1000.



Immunohistochemical of paraffin-embedded human breast cancer using Catalog No:108832(CANX antibody) at dilution of 1:100 (under 40x lens)



Immunohistochemical of paraffin-embedded human breast cancer using Catalog No:108832(CANX antibody) at dilution of 1:100 (under 10x lens)