

Anti-CLIC4 Rabbit antibody



Catalog Number: 168832

Product name 1:2000-1:10000

Anti-CLIC4 Rabbit antibody 1:100

Specificity 1:100

Human, Mouse, Rat 1:20

Antibody description 1:20

CLIC4 Rabbit monoclonal antibody

Preparation

Antigen: A synthetic peptide of human CLIC4

Formulation

Supplied in 50nM Tris-Glycine(pH 7.4), 0.15M NaCl, 40%Glycerol, 0.01% sodium azide and 0.05% BSA.

Storage

Store at 4°C short term. Aliquot and store at -20°C long term. Avoid freeze / thaw cycle.

Clonality

Monoclonal

Ig Type

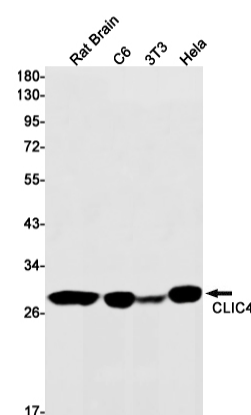
Rabbit IgG

Applications

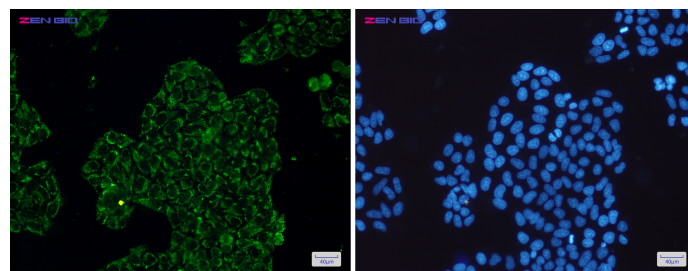
WB, IHC-P, ICC/IF, FC, IP

Dilutions

Validations



Western blot detection of CLIC4 in Rat Brain, C6, 3T3, HeLa cell lysates using CLIC4 Rabbit mAb(1:1000 diluted). Predicted band size: 29kDa. Observed band size: 29kDa.



Immunocytochemistry of CLIC4(green) in HeLa cells using CLIC4 Rabbit mAb at dilution 1/50, and DAPI(blue)