

PIPPIN antibody



Catalog Number: 113832

Product name

PIPPIN antibody

Immunogen

[Human CSDC2 Recombinant protein \(GST tag & His tag\)](#)

Specificity

Human, Mouse; other species not tested.

Antibody description

PIPPIN Rabbit Polyclonal antibody. Positive WB detected in mouse brain tissue. Positive IHC detected in human kidney tissue. Observed molecular weight by Western-blot: 30 kDa

Preparation

This antibody was obtained by immunization of PIPPIN recombinant protein (Accession Number: NM_014460). Purification method: Antigen affinity purified.

Formulation

PBS with 0.1% sodium azide and 50% glycerol pH 7.3.

Storage

Store at -20°C. DO NOT ALIQUOT

Clonality

Polyclonal

Ig Type

Rabbit IgG

Applications

ELISA, WB, IHC

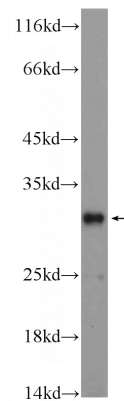
Dilutions

Recommended Dilution:

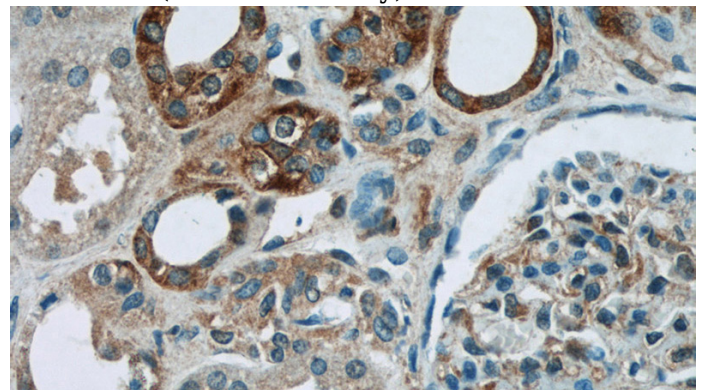
WB: 1:200-1:2000

IHC: 1:20-1:200

Validations



mouse brain tissue were subjected to SDS PAGE followed by western blot with Catalog No:113832(CSDC2 Antibody) at dilution of 1:600



Immunohistochemistry of paraffin-embedded human kidney tissue slide using Catalog No:113832(CSDC2 Antibody) at dilution of 1:50 (under 40x lens)