

Anti-TGFBR2 antibody

Catalog Number: 175722

Product name

Anti-TGFBR2 antibody

Specificity

Human, Mouse, Rat, Chicken, Pig, Cow, Horse, Rabbit, Sheep

Antibody description

Rabbit polyclonal antibody to TGFBR2

Preparation

This antigen of this antibody was klh conjugated synthetic peptide derived from human tgf beta r2 241-330/567

Formulation

Liquid, 0.01M TBS(pH7.4) with 1% BSA, 0.03% Proclin300 and 50% Glycerol.

Storage

Store at -20°C for one year. Avoid repeated freeze/thaw cycles. The lyophilized antibody is stable at room temperature for at least one month and for greater than a year when kept at -20°C. When reconstituted in sterile pH 7.4 0.01M PBS or diluent of antibody the antibody is stable for at least two weeks at 2-4°C.

Clonality

Polyclonal

Ig Type

Rabbit IgG

Applications

WB, IHC-P

Dilutions

WB:1:500-2000

IHC-P:1:400-800

Validations

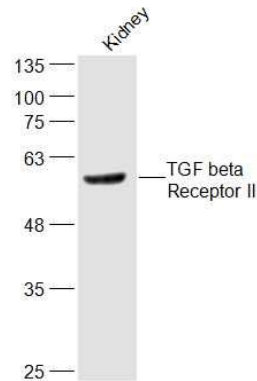


Fig1: Sample:; Kidney (Mouse) Lysate at 40 ug; Primary: Anti-TGF beta Receptor II at 1/300 dilution; Secondary: IRDye800CW Goat Anti-Rabbit IgG at 1/20000 dilution; Predicted band size: 62 kD; Observed band size: 62 kD

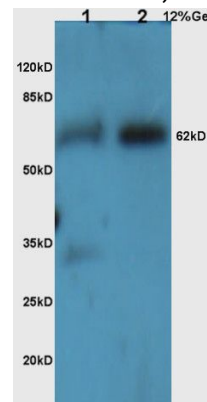


Fig2: Sample:; Brain(Mouse) Lysate at 30 ug; Brain(Rat) Lysate at 30 ug; Primary: Anti-TGF-beta-R2/TGFBR2 at 1/300 dilution; Secondary:IRDye800CW Goat Anti-Rabbit IgG at 1/20000 dilution; Predicted band size: 62 kD; Observed band size: 62 kD

Anti-TGFBR2 antibody

Catalog Number: 175722

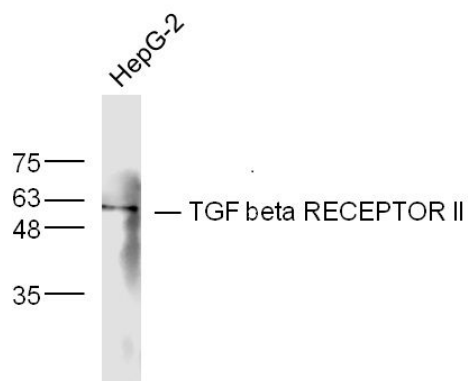


Fig3: Sample: HepG2 Cell Lysate at 40 ug;
Primary: Anti- TGF beta RECEPTOR II at 1/300 dilution; Secondary: IRDye800CW Goat Anti-Rabbit IgG at 1/20000 dilution; Predicted band size: 62 kD; Observed band size: 62 kD