

CISD2 antibody



Catalog Number: 109322

Product name

CISD2 antibody

Immunogen

[Human CISD2 Recombinant protein \(GST tag & His tag\)](#)

Specificity

Human, Mouse, Rat; other species not tested.

Antibody description

CISD2 Rabbit Polyclonal antibody. Positive IF detected in HepG2 cells. Positive IHC detected in human kidney tissue, human brain tissue, human lung tissue, human ovary tissue, human pancreas tissue, human spleen tissue, human testis tissue. Positive FC detected in HepG2 cells. Positive IP detected in mouse brain tissue. Positive WB detected in mouse kidney tissue, HeLa cells, human brain tissue, mouse brain tissue, mouse heart tissue. Observed molecular weight by Western-blot: 13-15 kDa

Preparation

This antibody was obtained by immunization of CISD2 recombinant protein (Accession Number: NM_001008388). Purification method: Antigen affinity purified.

Formulation

PBS with 0.02% sodium azide and 50% glycerol pH 7.3.

Storage

Store at -20°C. DO NOT ALIQUOT

Clonality

Polyclonal

Ig Type

Rabbit IgG

Applications

ELISA, WB, IHC, IF, IP, FC

Dilutions

Recommended Dilution:

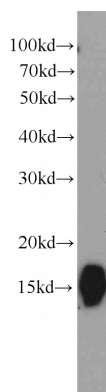
WB: 1:500-1:5000

IP: 1:200-1:2000

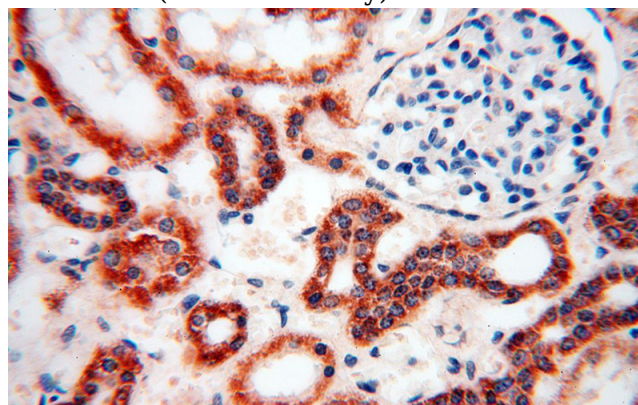
IHC: 1:20-1:200

IF: 1:20-1:200

Validations



mouse kidney tissue were subjected to SDS PAGE followed by western blot with Catalog No:109322(CISD2 antibody) at dilution of 1:1000

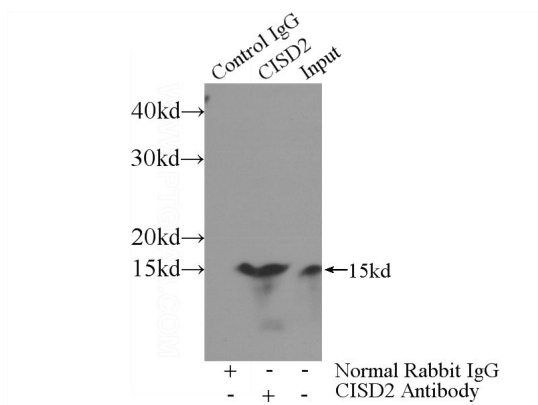


Immunohistochemical of paraffin-embedded human kidney using Catalog No:109322(CISD2 antibody) at dilution of 1:100 (under 40x lens)

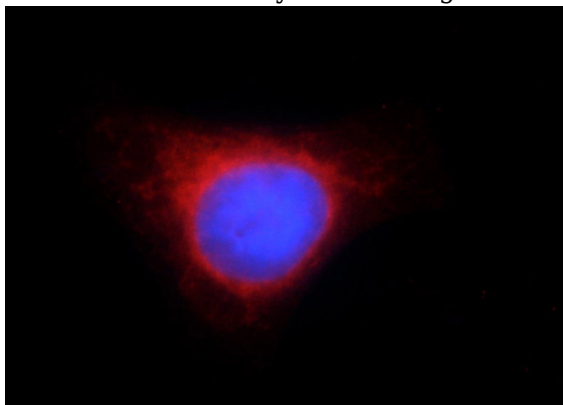
CISD2 antibody



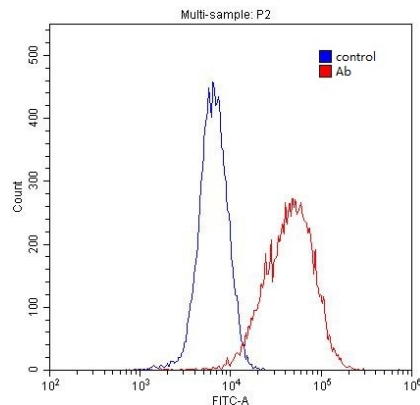
Catalog Number: 109322



IP Result of anti-CISD2 (IP:Catalog No:109322, 3ug; Detection:Catalog No:109322 1:700) with mouse brain tissue lysate 4000ug.



Immunofluorescent analysis of HepG2 cells using Catalog No:109322(CISD2 Antibody) at dilution of 1:50 and Rhodamine-Goat anti-Rabbit IgG



1X10⁶ HepG2 cells were stained with 0.2ug CISD2 antibody (Catalog No:109322, red) and control antibody (blue). Fixed with 4% PFA blocked with 3% BSA (30 min). Alexa Fluor 488-conjugated AffiniPure Goat Anti-Rabbit IgG(H+L) with dilution 1:1500.