

## Product name

Anti- antibody

## Specificity

Arabidopsis thaliana

## Antibody description

Rabbit polyclonal antibody to

## Preparation

This antigen of this antibody was synthetic peptide within a. thaliana ap-4 complex subunit mu aa 380-430 / 451.

## Formulation

Liquid, 1\*TBS (pH7.4), 0.2% BSA, 50% Glycerol. Preservative: 0.05% Sodium Azide.

## Storage

Store at +4°C after thawing. Aliquot store at -20°C. Avoid repeated freeze / thaw cycles.

## Clonality

Polyclonal

## Ig Type

Rabbit IgG

## Applications

IF, IHC-P, ELISA

## Dilutions

IF:1:50-1:100

IHC-P:1:50-1:200

ELISA:1:10,000

## Validations

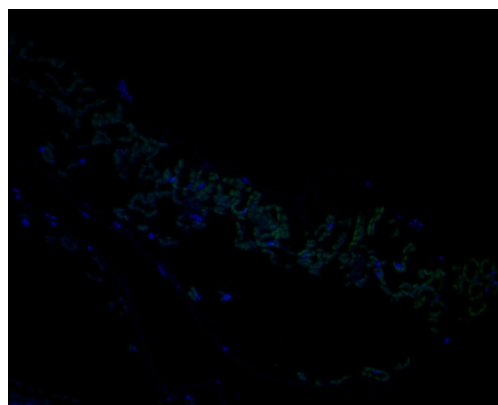


Fig1:: Immunofluorescence staining of paraffin-embedded A. thaliana using anti-AP-4 complex subunit mu rabbit polyclonal antibody. The section was pre-treated using heat mediated antigen retrieval with Tris-EDTA buffer (pH 9.0) for 20 minutes. The tissues were blocked in 10% negative goat serum for 1 hour at room temperature, washed with PBS, and then probed with AP-4 complex subunit mu antibody at 1/50 dilution for 10 hours at 4°C and detected using Alexa Fluor® 488 conjugate-Goat anti-Rabbit IgG (H+L) Secondary Antibody at a dilution of 1:500 for 1 hour at room temperature.

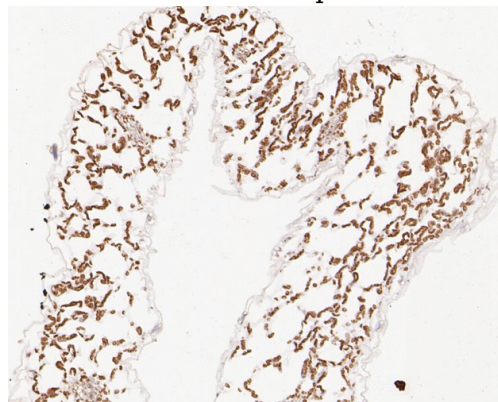


Fig2:: Immunohistochemical analysis of paraffin-embedded A. thaliana tissue using anti-AP-4 complex subunit mu antibody. The section was pre-treated using heat mediated antigen retrieval with Tris-EDTA buffer (pH 9.0) for 20 minutes. The tissues were blocked in 5% BSA for 30 minutes at room temperature, washed with ddH<sub>2</sub>O and PBS, and then probed with the primary antibody ( 1/50) for 30 minutes at room temperature. The detection was performed using an HRP conjugated compact polymer system. DAB

# Anti- antibody



Catalog Number: 176622

---

was used as the chromogen. Tissues were

counterstained with hematoxylin and mounted with DPX.