

IFITM1 antibody



Catalog Number: 111622

Product name

IFITM1 antibody

IP: 1:200-1:2000

IHC: 1:20-1:200

Specificity

Human; other species not tested.

Antibody description

IFITM1 Rabbit Polyclonal antibody. Positive WB detected in K-562 cells, HepG2 cells. Positive IP detected in ROS1728 cells. Positive IHC detected in human lymphoma tissue, human lung cancer tissue. Observed molecular weight by Western-blot: 17-19kd

Preparation

This antibody was obtained by immunization of IFITM1 recombinant protein (Accession Number: NM_003641). Purification method: Antigen affinity purified.

Formulation

PBS with 0.1% sodium azide and 50% glycerol pH 7.3.

Storage

Store at -20°C. DO NOT ALIQUOT

Clonality

Polyclonal

Ig Type

Rabbit IgG

Applications

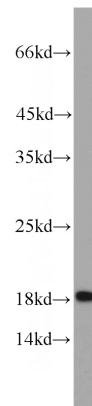
ELISA, WB, IHC, IP

Dilutions

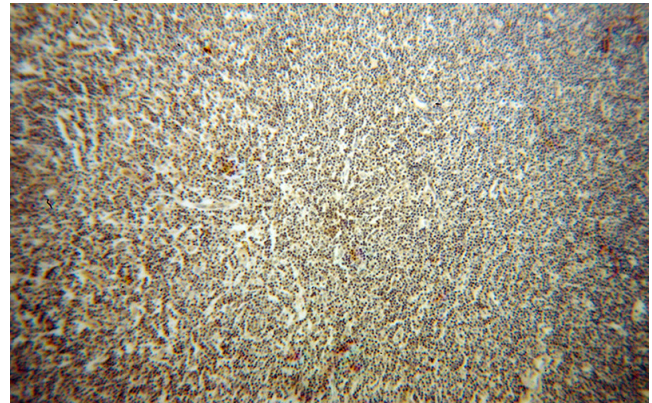
Recommended Dilution:

WB: 1:200-1:2000

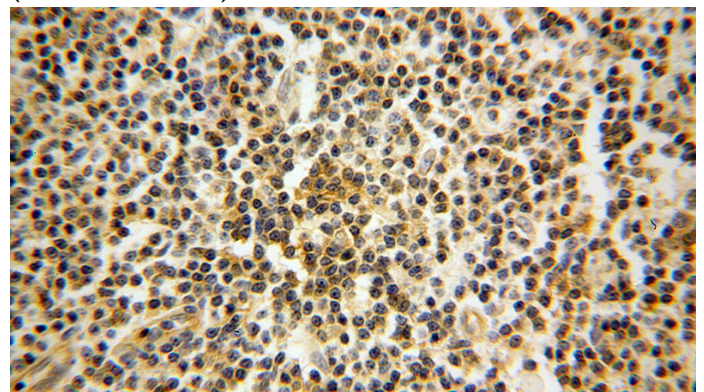
Validations



K-562 cells were subjected to SDS PAGE followed by western blot with Catalog No:111622(IFITM1 antibody) at dilution of 1:500



Immunohistochemical of paraffin-embedded human lymphoma using Catalog No:111622(IFITM1 antibody) at dilution of 1:50 (under 10x lens)



Immunohistochemical of paraffin-embedded

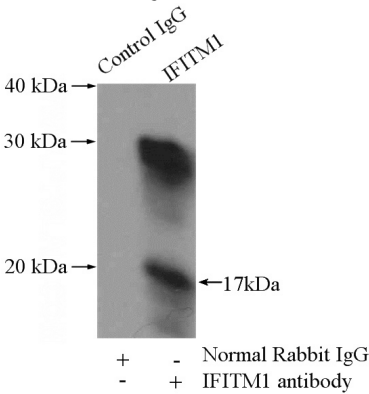
IFITM1 antibody



Catalog Number: 111622

human lymphoma using Catalog
No:111622(IFITM1 antibody) at dilution of 1:50

IP Result of anti-IFITM1 (IP:Catalog No:111622,
4ug; Detection:Catalog No:111622 1:500) with
ROS1728 cells lysate 3200ug.



(under 40x lens)