

# GDE1 antibody



Catalog Number: 110922

## Product name

GDE1 antibody

## Immunogen

[Human GDE1 Recombinant protein \(GST tag & His tag\)](#)

## Specificity

Human, Mouse, Rat; other species not tested.

## Antibody description

GDE1 Rabbit Polyclonal antibody. Positive WB detected in PC-3 cells, HEK-293 cells. Observed molecular weight by Western-blot: 55-66kd

## Preparation

This antibody was obtained by immunization of GDE1 recombinant protein (Accession Number: NM\_016641). Purification method: Antigen affinity purified.

## Formulation

PBS with 0.1% sodium azide and 50% glycerol pH 7.3.

## Storage

Store at -20°C. DO NOT ALIQUOT

## Clonality

Polyclonal

## Ig Type

Rabbit IgG

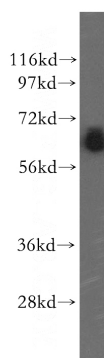
## Applications

ELISA, WB

## Dilutions

Recommended Dilution:  
WB: 1:200-1:2000

## Validations



PC-3 cells were subjected to SDS PAGE followed by western blot with Catalog No:110922(GDE1 antibody) at dilution of 1:500