

Anti-cas9 antibody



Catalog Number: 176702

Product name

ELISA: 1:10,000

Anti-cas9 antibody

ICC: 1:200-1:500

Antibody description

Rabbit polyclonal antibody to cas9

Preparation

This antigen of this antibody was recombinant protein

Formulation

Liquid, 1*PBS (pH7.4), 0.2% BSA, 40% Glycerol.
Preservative: 0.05% Sodium Azide.

Storage

Store at +4°C after thawing. Aliquot store at -20°C or -80°C. Avoid repeated freeze / thaw cycles.

Clonality

Polyclonal

Ig Type

Rabbit IgG

Applications

WB, ELISA, ICC

Dilutions

WB: 1:2,000-1:5,000

Validations

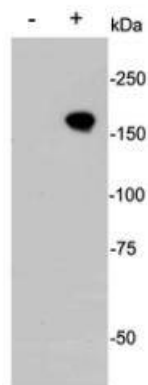
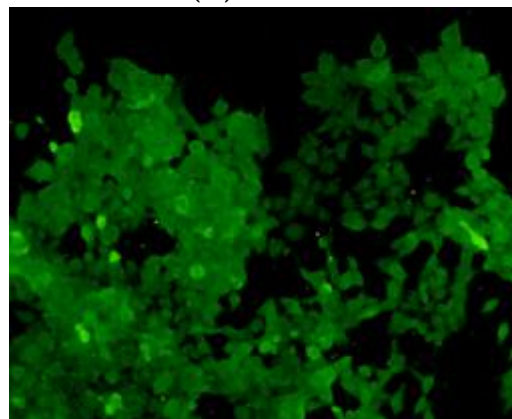


Fig1: Western blot analysis on CRISPR-Cas9 transfected 293 cells (+) and non transtected 293 cells (-).



cells (-).

Fig2: Immunofluorescence analysis of CRISPR-Cas9 transfected 293 cells. The cell expressing CRISPR-Cas9 can be detected using rabbit anti-CRISPR-Cas9 (1:500) followed by FITC (1:1000) goat anti-rabbit IgG.