

Anti-Paxillin Rabbit antibody



Catalog Number: 166702

Product name

Anti-Paxillin Rabbit antibody

Specificity

Human, Mouse, Rat

Antibody description

Paxillin Rabbit polyclonal antibody

Preparation

Antigen: Peptide sequence around aa. 116~120 (H-V-Y-S-F) derived from Human Paxillin.

Formulation

Supplied at 1.0mg/mL in phosphate buffered saline (without Mg²⁺ and Ca²⁺), pH 7.4, 150mM NaCl, 0.02% sodium azide and 50% glycerol.

Storage

Store at 4°C short term. Store at -20°C long term. Avoid freeze / thaw cycle.

Clonality

Polyclonal

Ig Type

Rabbit IgG

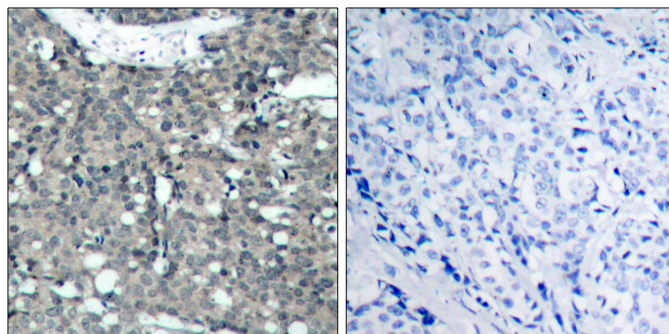
Applications

WB, IHC-P

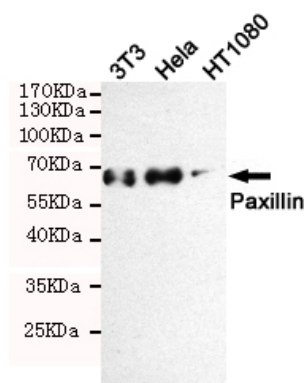
Dilutions

WB:1/1000IHC:1/50-1/100

Validations



Immunohistochemical analysis of paraffin-embedded human breast carcinoma tissue using Paxillin (Ab-118) Antibody (left) or the same antibody preincubated with blocking peptide (right).



(right).

Western blot analysis of extracts from 3T3, HeLa and HT1080 cells using Paxillin (Ab-118) rabbit pAb (1:1000 diluted). Predicted band size: 68KDa. Observed band size: 68KDa.