

# Anti-rSec6 Rabbit antibody



Catalog Number: 168799

## Product name

Anti-rSec6 Rabbit antibody

## Dilutions

1:1000-1:5000

## Specificity

1:20-1:100

Human, Mouse, Rat

1:20-1:50

## Antibody description

1:20-1:50

rSec6 Rabbit monoclonal antibody

## Preparation

Antigen: A synthetic peptide of human rSec6

## Formulation

Supplied in 50nM Tris-Glycine(pH 7.4), 0.15M NaCl, 40%Glycerol, 0.01% sodium azide and 0.05% BSA.

## Storage

Store at 4°C short term. Aliquot and store at -20°C long term. Avoid freeze / thaw cycle.

## Clonality

Monoclonal

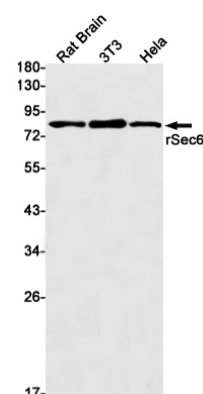
## Ig Type

Rabbit IgG

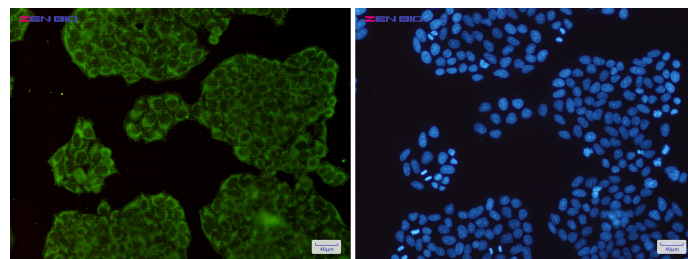
## Applications

WB, IHC-P, ICC/IF, IP

## Validations



Western blot detection of rSec6 in Rat Brain, 3T3, HeLa cell lysates using rSec6 Rabbit mAb (1:1000 diluted). Predicted band size: 87kDa. Observed band size: 87kDa.



Immunocytochemistry of rSec6 (green) in HeLa cells using rSec6 Rabbit mAb at dilution 1/200, and DAPI (blue)