

# Somatostatin-Specific antibody



Catalog Number: 115499

## Product name

Somatostatin-Specific antibody

WB: 1:200-1:2000

IHC: 1:20-1:200

## Specificity

Human, Mouse, Rat; other species not tested.

## Antibody description

Somatostatin-Specific Rabbit Polyclonal antibody. Positive IHC detected in human pancreas tissue, human liver tissue, human lung tissue, human ovary tissue, human spleen tissue, human testis tissue. Positive WB detected in human heart tissue, HeLa cells, human stomach tissue. Observed molecular weight by Western-blot: 17 kDa

## Preparation

This antibody was obtained by immunization of Peptide (Accession Number: NM\_001048). Purification method: Antigen affinity purified.

## Formulation

PBS with 0.02% sodium azide and 50% glycerol pH 7.3.

## Storage

Store at -20°C. DO NOT ALIQUOT

## Clonality

Polyclonal

## Ig Type

Rabbit IgG

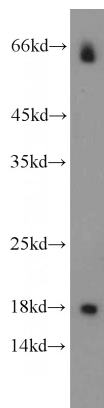
## Applications

ELISA, WB, IHC

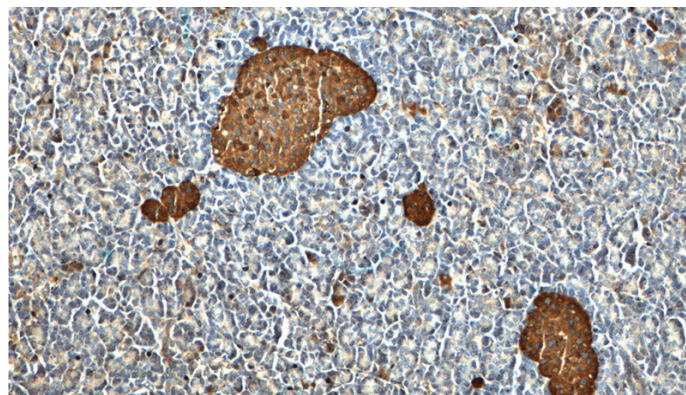
## Dilutions

Recommended Dilution:

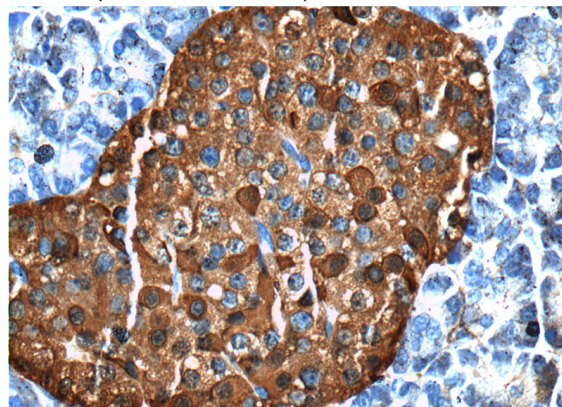
## Validations



human heart tissue were subjected to SDS PAGE followed by western blot with Catalog No:115499(SST-Specific antibody) at dilution of 1:500



Immunohistochemistry of paraffin-embedded human pancreas tissue slide using Catalog No:115499(SST-Specific Antibody) at dilution of 1:200 (under 10x lens).



# Somatostatin-Specific antibody



Catalog Number: 115499

---

Immunohistochemistry of paraffin-embedded human pancreas tissue slide using Catalog

No:115499(SST-Specific Antibody) at dilution of 1:200 (under 40x lens).