

# INF2 antibody



Catalog Number: 111789

## Product name

INF2 antibody

## Immunogen

[Human INF2 Recombinant protein \(GST tag & His tag\)](#)

## Specificity

Human, Mouse; other species not tested.

## Antibody description

INF2 Rabbit Polyclonal antibody. Positive WB detected in A431 cells, HeLa cells, mouse brain tissue, NIH/3T3 cells. Positive IP detected in NIH/3T3 cells. Positive IHC detected in human kidney tissue. Positive IF detected in NIH/3T3 cells. Observed molecular weight by Western-blot: 180-200 kDa

## Preparation

This antibody was obtained by immunization of INF2 recombinant protein (Accession Number: BC008756). Purification method: Antigen affinity purified.

## Formulation

PBS with 0.02% sodium azide and 50% glycerol pH 7.3.

## Storage

Store at -20°C. DO NOT ALIQUOT

## Clonality

Polyclonal

## Ig Type

Rabbit IgG

## Applications

ELISA, WB, IHC, IF, IP

## Dilutions

Recommended Dilution:

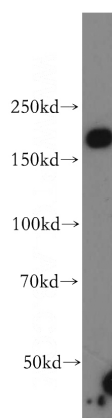
WB: 1:1000-1:10000

IP: 1:200-1:2000

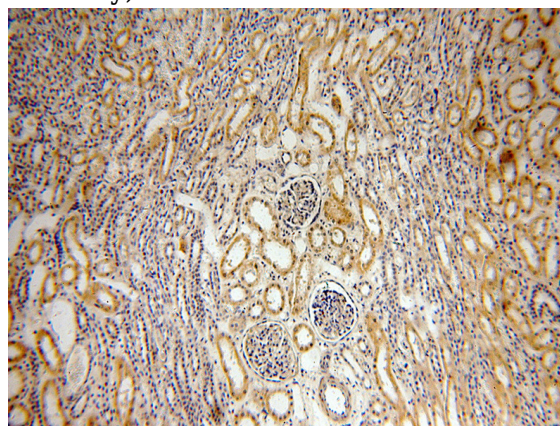
IHC: 1:20-1:200

IF: 1:20-1:200

## Validations



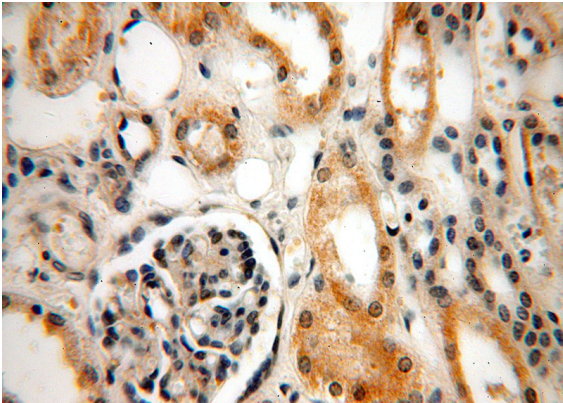
A431 cells were subjected to SDS PAGE followed by western blot with Catalog No:111789(INF2 antibody) at dilution of 1:500



Immunohistochemical of paraffin-embedded human kidney using Catalog No:111789(INF2 antibody) at dilution of 1:100 (under 10x lens)

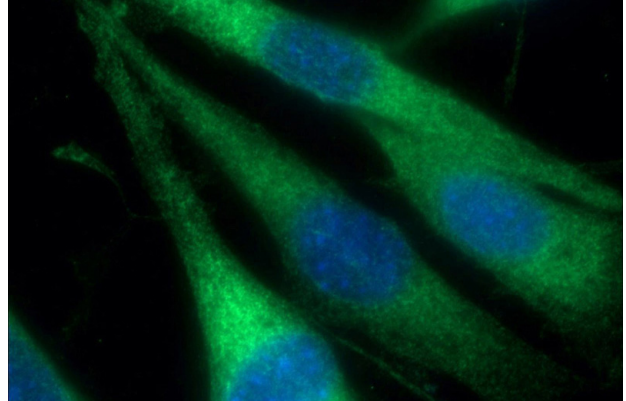
# INF2 antibody

Catalog Number: 111789



Immunohistochemical of paraffin-embedded human kidney using Catalog No:111789(INF2 antibody) at dilution of 1:100 (under 40x lens)

IP Result of anti-INF2 (IP:Catalog No:111789, 4ug; Detection:Catalog No:111789 1:500) with NIH/3T3 cells lysate 4000ug.



Immunofluorescent analysis of (-20oc Ethanol) fixed NIH/3T3 cells using Catalog No:111789(INF2 Antibody) at dilution of 1:50 and Alexa Fluor 488-conjugated AffiniPure Goat Anti-Rabbit IgG(H+L)

