

PSMC2 antibody



Catalog Number: 114389

Product name

PSMC2 antibody

WB: 1:1000-1:10000

IP: 1:200-1:2000

Specificity

Human, Mouse, Rat; other species not tested.

IHC: 1:20-1:200

IF: 1:20-1:200

Antibody description

PSMC2 Rabbit Polyclonal antibody. Positive IF detected in MCF-7 cells. Positive IHC detected in human ovary tumor tissue, human breast cancer tissue. Positive WB detected in human adrenal gland tissue, mouse liver tissue, mouse spleen tissue. Positive IP detected in mouse spleen tissue. Observed molecular weight by Western-blot: 49kd

Preparation

This antibody was obtained by immunization of PSMC2 recombinant protein (Accession Number: NM_002803). Purification method: Antigen affinity purified.

Formulation

PBS with 0.02% sodium azide and 50% glycerol pH 7.3.

Storage

Store at -20°C. DO NOT ALIQUOT

Clonality

Polyclonal

Ig Type

Rabbit IgG

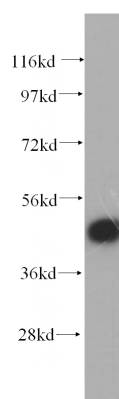
Applications

ELISA, WB, IHC, IF, IP

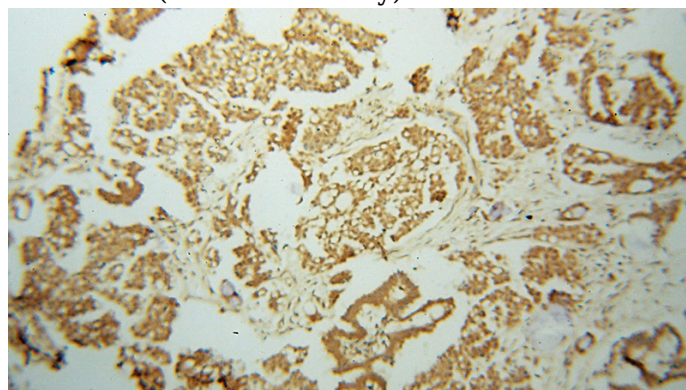
Dilutions

Recommended Dilution:

Validations



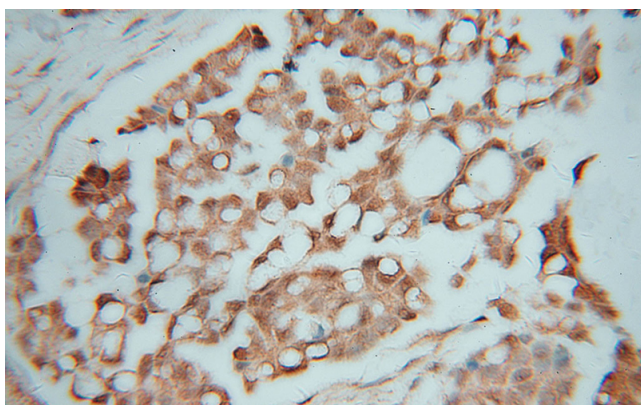
human adrenal gland tissue were subjected to SDS PAGE followed by western blot with Catalog No:114389(PSMC2 antibody) at dilution of 1:500



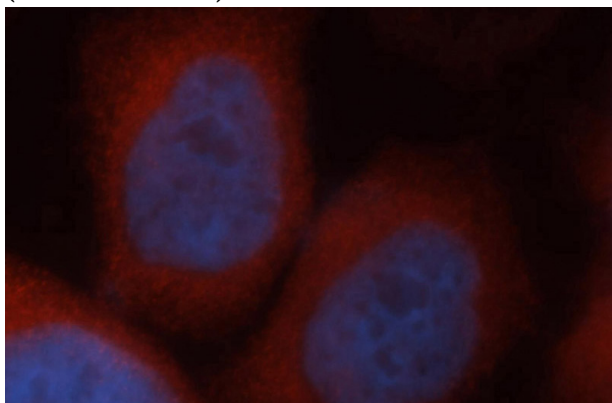
Immunohistochemical of paraffin-embedded human ovary tumor using Catalog No:114389(PSMC2 antibody) at dilution of 1:100 (under 10x lens)

PSMC2 antibody

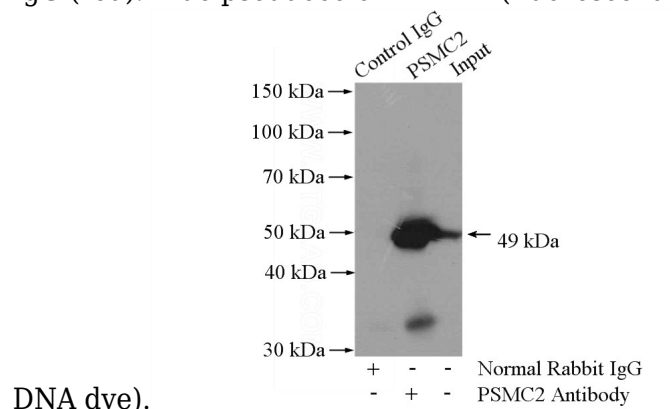
Catalog Number: 114389



Immunohistochemical of paraffin-embedded human ovary tumor using Catalog No:114389(PSMC2 antibody) at dilution of 1:100 (under 40x lens)



Immunofluorescent analysis of MCF-7 cells, using PSMC2 antibody Catalog No:114389 at 1:50 dilution and Rhodamine-labeled goat anti-rabbit IgG (red). Blue pseudocolor = DAPI (fluorescent



DNA dye).

IP Result of anti-PSMC2 (IP:Catalog No:114389, 4ug; Detection:Catalog No:114389 1:500) with mouse spleen tissue lysate 4800ug.