

MLYCD antibody



Catalog Number: 112689

Product name

MLYCD antibody

Specificity

Human, Mouse, Rat; other species not tested.

Antibody description

MLYCD Rabbit Polyclonal antibody. Positive IHC detected in human kidney tissue, human heart tissue, human liver tissue. Positive IF detected in HepG2 cells. Positive IP detected in mouse heart tissue. Positive WB detected in human testis tissue, HEK-293 cells, HepG2 cells, HT-1080 cells, human heart tissue, L02 cells, mouse brain tissue, mouse heart tissue, mouse testis tissue, rat brain tissue. Observed molecular weight by Western-blot: 50kd, 55kd, 66kd

Preparation

This antibody was obtained by immunization of MLYCD recombinant protein (Accession Number: BC000286). Purification method: Antigen affinity purified.

Formulation

PBS with 0.02% sodium azide and 50% glycerol pH 7.3.

Storage

Store at -20°C. DO NOT ALIQUOT

Clonality

Polyclonal

Ig Type

Rabbit IgG

Applications

ELISA, WB, IHC, IF, IP

Dilutions

Recommended Dilution:

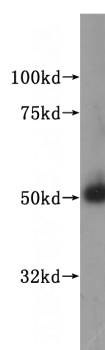
WB: 1:500-1:5000

IP: 1:200-1:2000

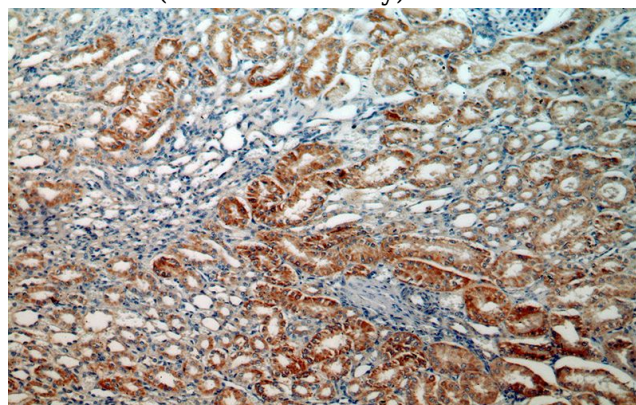
IHC: 1:20-1:200

IF: 1:20-1:200

Validations



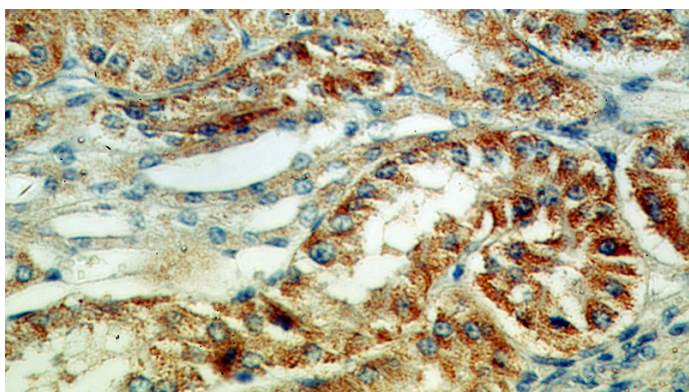
human testis tissue were subjected to SDS PAGE followed by western blot with Catalog No:112689(MLYCD antibody) at dilution of 1:400



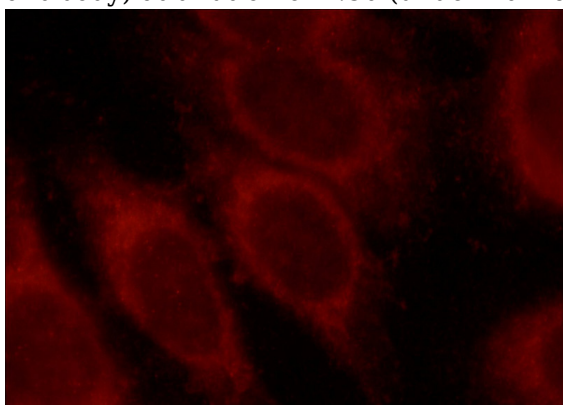
Immunohistochemical of paraffin-embedded human kidney using Catalog No:112689(MLYCD antibody) at dilution of 1:50 (under 10x lens)

MLYCD antibody

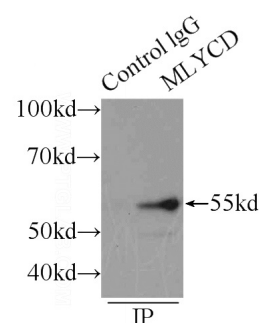
Catalog Number: 112689



Immunohistochemical of paraffin-embedded human kidney using Catalog No:112689(MLYCD antibody) at dilution of 1:50 (under 40x lens)



Immunofluorescent analysis of HepG2 cells, using MLYCD antibody Catalog No:112689 at 1:50 dilution and Rhodamine-labeled goat anti-rabbit



IgG (red).

IP Result of anti-MLYCD (IP:Catalog No:112689, 4ug; Detection:Catalog No:112689 1:500) with mouse heart tissue lysate 5000ug.