

SKP1 antibody



Catalog Number: 115289

Product name

SKP1 antibody

Recommended Dilution:

WB: 1:200-1:2000

Immunogen

IHC: 1:20-1:200

[Human SKP1 Recombinant protein \(GST tag & His tag\)](#)

IF: 1:10-1:100

Specificity

Human, Mouse, Rat; other species not tested.

Antibody description

SKP1 Rabbit Polyclonal antibody. Positive IHC detected in human gliomas tissue. Positive IF detected in HepG2 cells. Positive WB detected in human brain tissue, HeLa cells. Observed molecular weight by Western-blot: 19 kDa

Validations



Preparation

This antibody was obtained by immunization of SKP1 recombinant protein (Accession Number: NM_170679). Purification method: Antigen affinity purified.

human brain tissue were subjected to SDS PAGE followed by western blot with Catalog No:115289(SK1 antibody) at dilution of 1:500

Formulation

PBS with 0.1% sodium azide and 50% glycerol pH 7.3.

Storage

Store at -20°C. DO NOT ALIQUOT

Clonality

Polyclonal

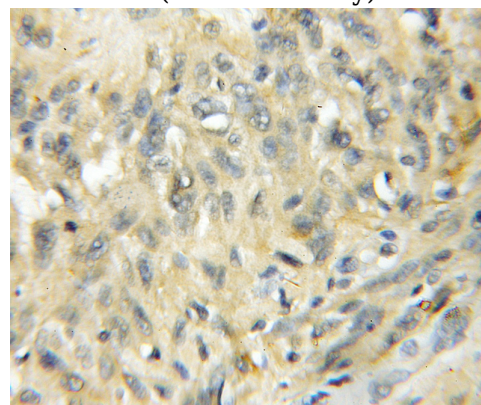
Ig Type

Rabbit IgG

Applications

ELISA, WB, IHC, IF

Dilutions

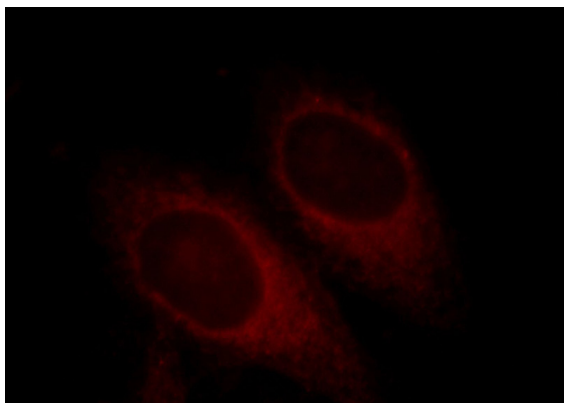


Immunohistochemical of paraffin-embedded human gliomas using Catalog No:115289(SK1 antibody) at dilution of 1:50 (under 10x lens)

SKP1 antibody



Catalog Number: 115289



Immunofluorescent analysis of HepG2 cells, using SKP1 antibody Catalog No:115289 at 1:25 dilution and Rhodamine-labeled goat anti-rabbit IgG (red).