

PGBD1 antibody



Catalog Number: 113779

Product name

PGBD1 antibody

IHC: 1:20-1:200

IF: 1:10-1:100

Specificity

Human, Mouse; other species not tested.

Antibody description

PGBD1 Rabbit Polyclonal antibody. Positive WB detected in HeLa cells, HepG2 cells, K-562 cells, mouse liver tissue. Positive IF detected in HepG2 cells. Positive IHC detected in human testis tissue, human kidney tissue. Observed molecular weight by Western-blot: 85-90 kDa

Preparation

This antibody was obtained by immunization of PGBD1 recombinant protein (Accession Number: NM_001184743). Purification method: Antigen affinity purified.

Formulation

PBS with 0.1% sodium azide and 50% glycerol pH 7.3.

Storage

Store at -20°C. DO NOT ALIQUOT

Clonality

Polyclonal

Ig Type

Rabbit IgG

Applications

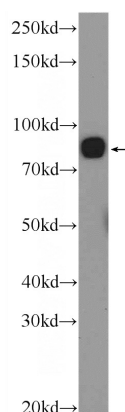
ELISA, WB, IHC, IF

Dilutions

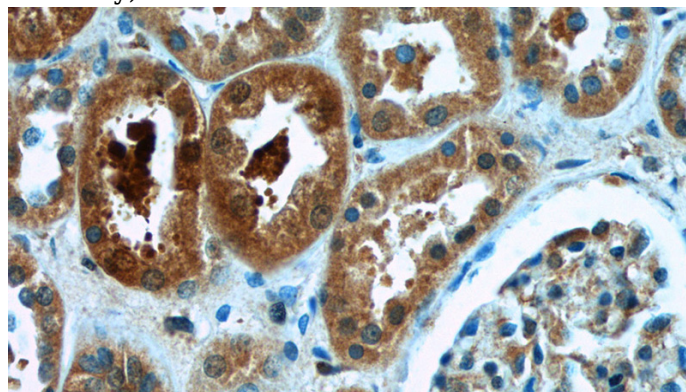
Recommended Dilution:

WB: 1:200-1:2000

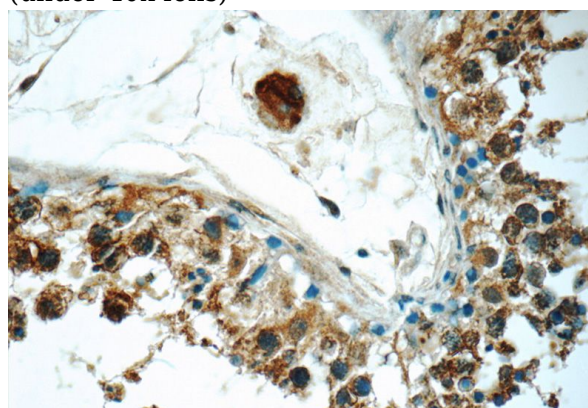
Validations



HeLa cells were subjected to SDS PAGE followed by western blot with Catalog No:113779(PGBD1 Antibody) at dilution of 1:600



Immunohistochemistry of paraffin-embedded human kidney tissue slide using Catalog No:113779(PGBD1 Antibody) at dilution of 1:50 (under 40x lens)



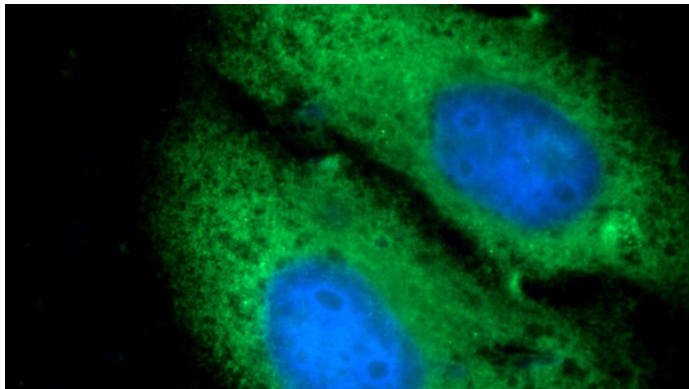
Immunohistochemistry of paraffin-embedded

PGBD1 antibody



Catalog Number: 113779

human testis tissue slide using Catalog No:113779(PGBD1 Antibody) at dilution of 1:50 (under 40x lens)



Immunofluorescent analysis of HepG2 cells using Catalog No:113779(PGBD1 Antibody) at dilution of 1:25 and Alexa Fluor 488-conjugated AffiniPure Goat Anti-Rabbit IgG(H+L)