

# LAMR1,RPSA antibody



Catalog Number: 112279

## Product name

LAMR1,RPSA antibody

## Specificity

Human,Mouse,Rat; other species not tested.

## Antibody description

LAMR1,RPSA Rabbit Polyclonal antibody. Positive IF detected in HepG2 cells. Positive WB detected in HeLa cells, COLO 320 cells, HepG2 cells, mouse colon tissue, mouse liver tissue. Observed molecular weight by Western-blot: 40 kDa

## Preparation

This antibody was obtained by immunization of LAMR1,RPSA recombinant protein (Accession Number: NM\_002295). Purification method: Antigen affinity purified.

## Formulation

PBS with 0.02% sodium azide and 50% glycerol pH 7.3.

## Storage

Store at -20°C. DO NOT ALIQUOT

## Clonality

Polyclonal

## Ig Type

Rabbit IgG

## Applications

ELISA, WB, IF

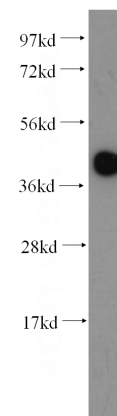
## Dilutions

Recommended Dilution:

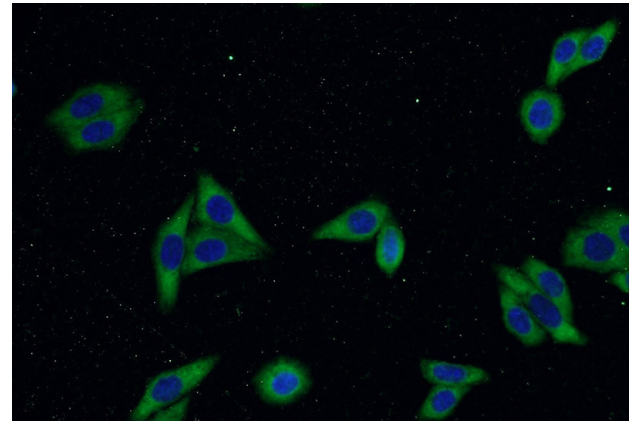
WB: 1:500-1:5000

IF: 1:20-1:200

## Validations



HeLa cells were subjected to SDS PAGE followed by western blot with Catalog No:112279(LAMR1,RPSA antibody) at dilution of 1:500



Immunofluorescent analysis of HepG2 cells using Catalog No:112279(LAMR1,RPSA Antibody) at dilution of 1:50 and Alexa Fluor 488-conjugated AffiniPure Goat Anti-Rabbit IgG(H+L)