

HCFC1 antibody



Catalog Number: 111279

Product name

HCFC1 antibody

IHC: 1:20-1:200

IF: 1:50-1:500

Specificity

Human, Mouse, Rat; other species not tested.

Antibody description

HCFC1 Rabbit Polyclonal antibody. Positive IHC detected in human colon cancer tissue, human kidney tissue. Positive IF detected in HEK-293 cells. Positive WB detected in HEK-293 cells, A431 cells, Jurkat cells. Observed molecular weight by Western-blot: 230 kDa, 300 kDa

Preparation

This antibody was obtained by immunization of HCFC1 recombinant protein (Accession Number: BC063435). Purification method: Antigen affinity purified.

Formulation

PBS with 0.02% sodium azide and 50% glycerol pH 7.3.

Storage

Store at -20°C. DO NOT ALIQUOT

Clonality

Polyclonal

Ig Type

Rabbit IgG

Applications

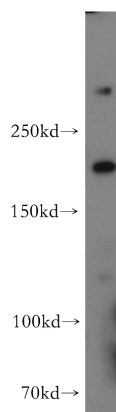
ELISA, WB, IHC, IF

Dilutions

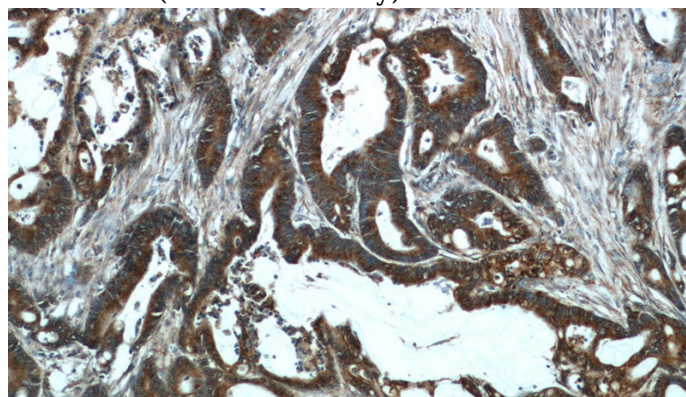
Recommended Dilution:

WB: 1:500-1:5000

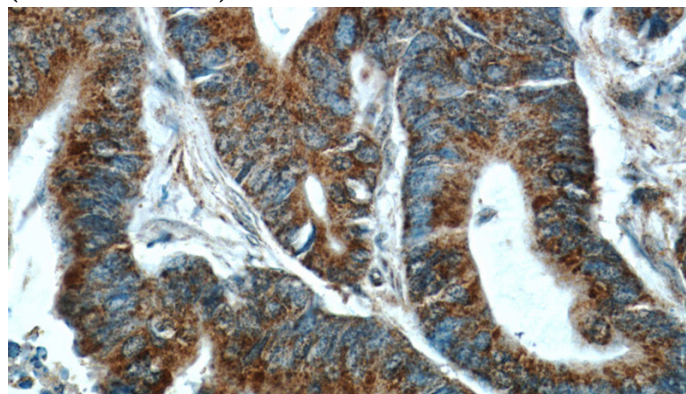
Validations



HEK-293 cells were subjected to SDS PAGE followed by western blot with Catalog No:111279(HCFC1 antibody) at dilution of 1:500



Immunohistochemical of paraffin-embedded human colon cancer using Catalog No:111279(HCFC1 antibody) at dilution of 1:50 (under 10x lens)



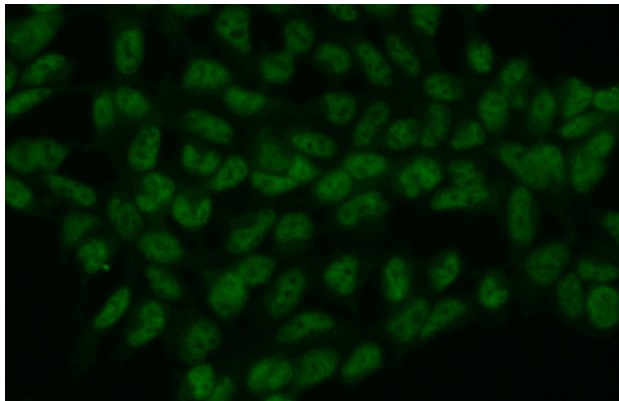
Immunohistochemical of paraffin-embedded

HCFC1 antibody



Catalog Number: 111279

human colon cancer using Catalog
No:111279(HCFC1 antibody) at dilution of 1:50
(under 40x lens)



Immunofluorescent analysis of (10%
Formaldehyde) fixed HEK-293 cells using Catalog
No:111279(HCFC1 Antibody) at dilution of 1:50
and Alexa Fluor 488-conjugated AffiniPure Goat
Anti-Rabbit IgG(H+L)