

# WWP2 antibody



Catalog Number: 116979

## Product name

WWP2 antibody

## Specificity

Human, Mouse; other species not tested.

## Antibody description

WWP2 Rabbit Polyclonal antibody. Positive WB detected in mouse liver tissue, A549 cells. Positive IHC detected in human pancreas cancer tissue. Observed molecular weight by Western-blot: 110-115 kDa

## Preparation

This antibody was obtained by immunization of WWP2 recombinant protein (Accession Number: XM\_017022880). Purification method: Antigen affinity purified.

## Formulation

PBS with 0.02% sodium azide and 50% glycerol pH 7.3.

## Storage

Store at -20°C. DO NOT ALIQUOT

## Clonality

Polyclonal

## Ig Type

Rabbit IgG

## Applications

ELISA, WB, IHC

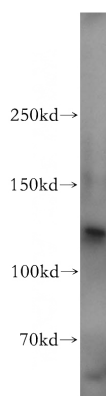
## Dilutions

Recommended Dilution:

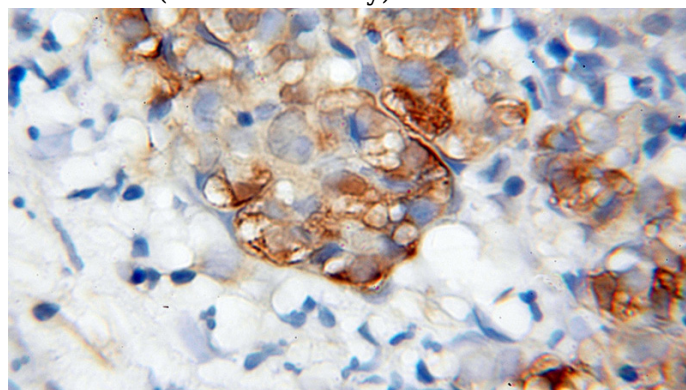
WB: 1:200-1:2000

IHC: 1:20-1:200

## Validations



mouse liver tissue were subjected to SDS PAGE followed by western blot with Catalog No:116979(WWP2 antibody) at dilution of 1:500



Immunohistochemical of paraffin-embedded human pancreas cancer using Catalog No:116979(WWP2 antibody) at dilution of 1:100 (under 40x lens)