

SH2D1B antibody



Catalog Number: 115179

Product name

SH2D1B antibody

Immunogen

[Human SH2D1B Recombinant protein \(GST tag & His tag\)](#)

Specificity

Human, Mouse, Rat; other species not tested.

Antibody description

SH2D1B Rabbit Polyclonal antibody. Positive FC detected in Jurkat cells. Positive IHC detected in human kidney tissue. Positive WB detected in Jurkat cells, HepG2 cells, HL-60 cells, mouse thymus tissue, Raji cells. Observed molecular weight by Western-blot: 15 kDa

Preparation

This antibody was obtained by immunization of SH2D1B recombinant protein (Accession Number: NM_053282). Purification method: Antigen affinity purified.

Formulation

PBS with 0.02% sodium azide and 50% glycerol pH 7.3.

Storage

Store at -20°C. DO NOT ALIQUOT

Clonality

Polyclonal

Ig Type

Rabbit IgG

Applications

ELISA, WB, IHC, FC

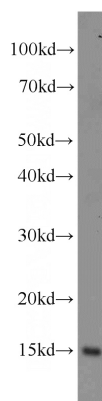
Dilutions

Recommended Dilution:

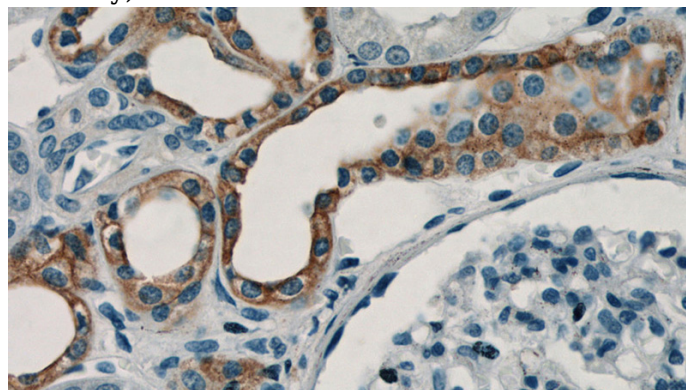
WB: 1:200-1:2000

IHC: 1:20-1:200

Validations



Jurkat cells were subjected to SDS PAGE followed by western blot with Catalog No:115179(SH2D1B antibody) at dilution of 1:800

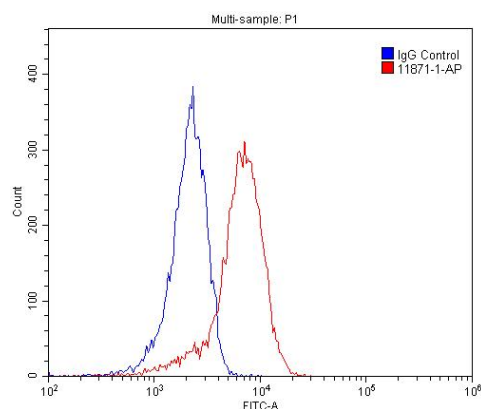


Immunohistochemistry of paraffin-embedded human kidney tissue slide using Catalog No:115179(SH2D1B Antibody) at dilution of 1:50 (under 40x lens)

SH2D1B antibody



Catalog Number: 115179



1X10⁶ Jurkat cells were stained with 0.2ug SH2D1B antibody (Catalog No:115179, red) and control antibody (blue). Fixed with 4% PFA blocked with 3% BSA (30 min). Alexa Fluor 488-conjugated AffiniPure Goat Anti-Rabbit IgG(H+L) with dilution 1:1500.