

**Product name**

Polyclonal

COSMC antibody

**Ig Type****Specificity**

Rabbit IgG

Human, Mouse, Rat; other species not tested.

**Applications****Antibody description**

ELISA, WB

COSMC Rabbit Polyclonal antibody. Positive WB detected in HeLa cells. Observed molecular weight by Western-blot: 36kd

**Dilutions**

Recommended Dilution:

WB: 1:500-1:5000

**Preparation**

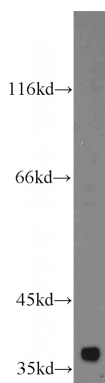
This antibody was obtained by immunization of COSMC recombinant protein (Accession Number: NM\_152692). Purification method: Antigen affinity purified.

**Validations****Formulation**

PBS with 0.02% sodium azide and 50% glycerol pH 7.3.

**Storage**

Store at -20°C. DO NOT ALIQUOT

**Clonality**

HeLa cells were subjected to SDS PAGE followed by western blot with Catalog No:109479(C1GALT1C1 antibody) at dilution of 1:800