

Synaptopodin antibody



Catalog Number: 115769

Product name

Synaptopodin antibody

IHC: 1:20-1:200

IF: 1:10-1:100

Specificity

Human, Mouse, Rat; other species not tested.

Antibody description

Synaptopodin Rabbit Polyclonal antibody. Positive WB detected in mouse brain tissue, rat brain tissue. Positive IF detected in Hela cells, HepG2 cells. Positive IHC detected in mouse brain tissue. Observed molecular weight by Western-blot: 99-115 kDa

Preparation

This antibody was obtained by immunization of Synaptopodin recombinant protein (Accession Number: XM_024454351). Purification method: Antigen affinity purified.

Formulation

PBS with 0.02% sodium azide and 50% glycerol pH 7.3.

Storage

Store at -20°C. DO NOT ALIQUOT

Clonality

Polyclonal

Ig Type

Rabbit IgG

Applications

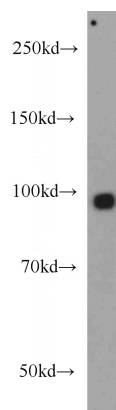
ELISA, WB, IF, IHC

Dilutions

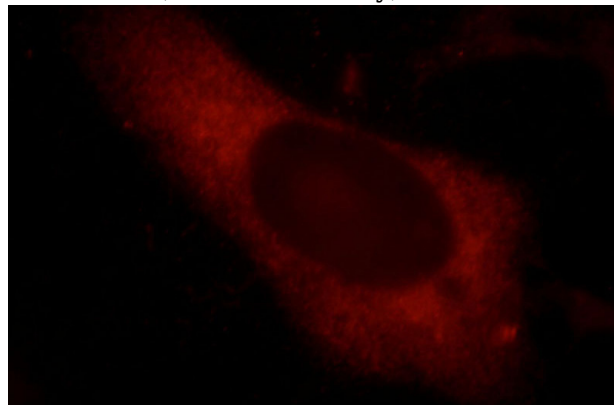
Recommended Dilution:

WB: 1:500-1:5000

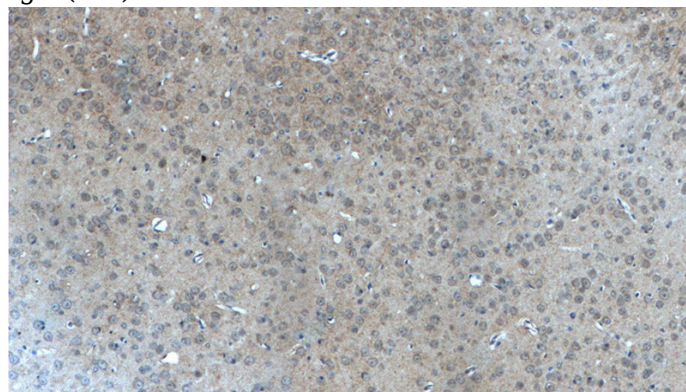
Validations



mouse brain tissue were subjected to SDS PAGE followed by western blot with Catalog No:115769(SYNPO antibody) at dilution of 1:1000



Immunofluorescent analysis of HepG2 cells, using SYNPO antibody Catalog No:115769 at 1:25 dilution and Rhodamine-labeled goat anti-rabbit IgG (red).

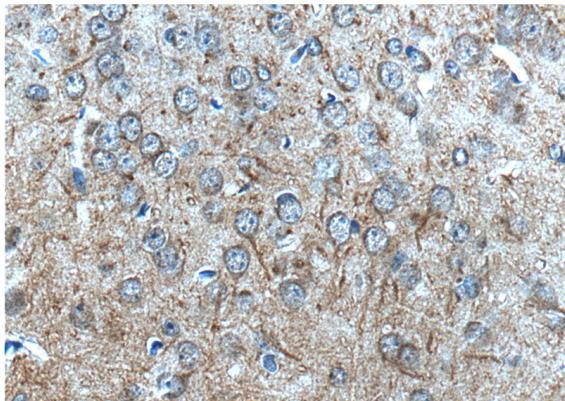


Immunohistochemistry of paraffin-embedded

Synaptopodin antibody

Catalog Number: 115769

mouse brain tissue slide using Catalog No:115769(SYNPO Antibody) at dilution of 1:200 (under 10x lens).



Immunohistochemistry of paraffin-embedded mouse brain tissue slide using Catalog No:115769(SYNPO Antibody) at dilution of 1:200 (under 40x lens).