

# Anti-Phospho-EGF Receptor (Tyr869) Rabbit antibody



Catalog Number: 166669

## Product name

WB

Anti-Phospho-EGF Receptor (Tyr869) Rabbit antibody

## Dilutions

WB:1/500-1/1000

## Specificity

Human, Mouse, Rat

## Antibody description

Phospho-EGF Receptor (Tyr869) Rabbit polyclonal antibody

## Preparation

Antigen: Peptide sequence around phosphorylation site of tyrosine 869 (K-E-Y(p)-H-A) derived from Human EGFR.

## Formulation

Supplied at 1.0mg/mL in phosphate buffered saline (without Mg<sup>2+</sup> and Ca<sup>2+</sup>), pH 7.4, 150mM NaCl, 0.02% sodium azide and 50% glycerol.

## Storage

Store at 4°C short term. Store at -20°C long term. Avoid freeze / thaw cycle.

## Clonality

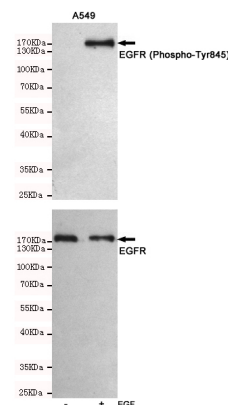
Polyclonal

## Ig Type

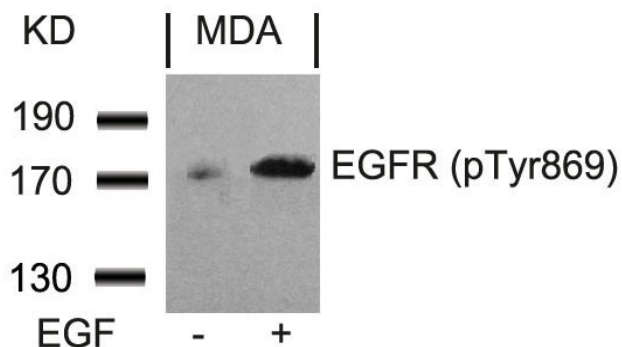
Rabbit IgG

## Applications

## Validations



Western blot analysis of extracts from A549 cells, untreated or treated with EGF(10ng/ml,10min), using EGFR (Phospho-Tyr845) Rabbit pAb (166669,1:500 diluted,upper) and EGF Receptor Mouse mAb (201012-3F12,lower).



Western blot analysis of extracts from MDA cells untreated or treated with EGF using EGFR (Phospho-Tyr869) Antibody .