

CCDC25 antibody



Catalog Number: 108969

Product name

CCDC25 antibody

Recommended Dilution:

WB: 1:500-1:5000

Immunogen

IHC: 1:20-1:200

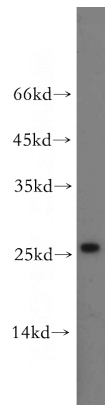
[Human CCDC25 Recombinant protein \(GST tag & His tag\)](#)

IF: 1:10-1:100

Specificity

human, mouse, rat; other species not tested.

Validations



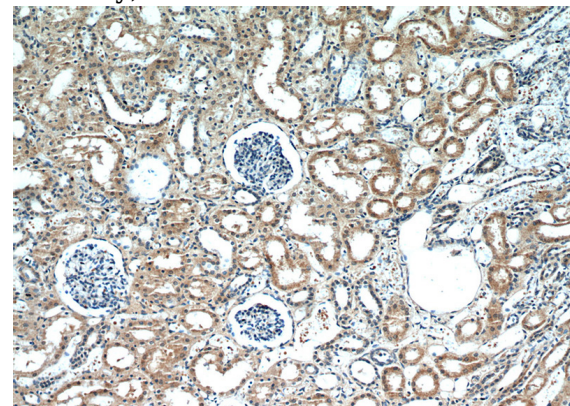
Antibody description

CCDC25 Rabbit Polyclonal antibody. Positive WB detected in HeLa cells, Jurkat cells. Positive IF detected in Hela. Positive IHC detected in human kidney. Observed molecular weight by Western-blot: 24-26kd

HeLa cells were subjected to SDS PAGE followed by western blot with Catalog No:108969(CCDC25 antibody) at dilution of 1:500

Preparation

This antibody was obtained by immunization of CCDC25 recombinant protein (Accession Number: NM_001304532). Purification method: Antigen affinity purified.



Formulation

PBS with 0.02% sodium azide and 50% glycerol pH 7.3.

Storage

Store at -20°C. DO NOT ALIQUOT

Clonality

Polyclonal

Immunohistochemical of paraffin-embedded human kidney using Catalog No:108969(CCDC25 antibody) at dilution of 1:50 (under 10x lens)

Ig Type

Rabbit IgG

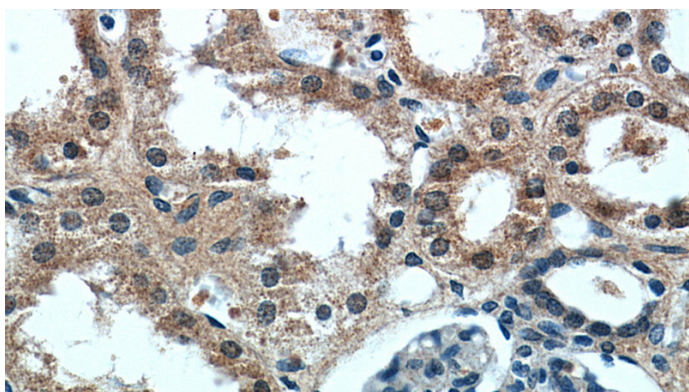
Applications

ELISA, WB, IHC, IF

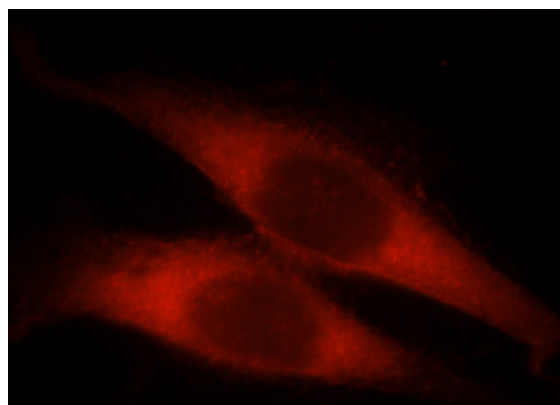
Dilutions

CCDC25 antibody

Catalog Number: 108969



Immunohistochemical of paraffin-embedded human kidney using Catalog No:108969(CCDC25 antibody) at dilution of 1:50 (under 40x lens)



Immunofluorescent analysis of HeLa cells, using CCDC25 antibody Catalog No:108969 at 1:25 dilution and Rhodamine-labeled goat anti-rabbit IgG (red).