

ZO-1 antibody



Catalog Number: 117259

Product name

ZO-1 antibody

Immunogen

[Human ZO1 Recombinant protein \(GST tag & His tag\)](#)

Specificity

Human, Dog, Mouse, Rat; other species not tested.

Antibody description

ZO-1 Rabbit Polyclonal antibody. Positive IP detected in HEK-293 cells. Positive WB detected in HepG2 cells, A431 cells, COLO 320 cells, HEK-293 cells. Positive FC detected in MCF-7 cells. Positive IF detected in MDCK cells, HUVEC cells. Positive IHC detected in human kidney tissue. Observed molecular weight by Western-blot: 230 kDa

Preparation

This antibody was obtained by immunization of ZO-1 recombinant protein (Accession Number: NM_003257). Purification method: Antigen affinity purified.

Formulation

PBS with 0.02% sodium azide and 50% glycerol pH 7.3.

Storage

Store at -20°C. DO NOT ALIQUOT

Clonality

Polyclonal

Ig Type

Rabbit IgG

Applications

ELISA, WB, IHC, FC, IP, IF

Dilutions

Recommended Dilution:

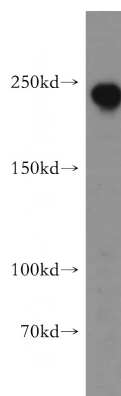
WB: 1:200-1:2000

IP: 1:200-1:2000

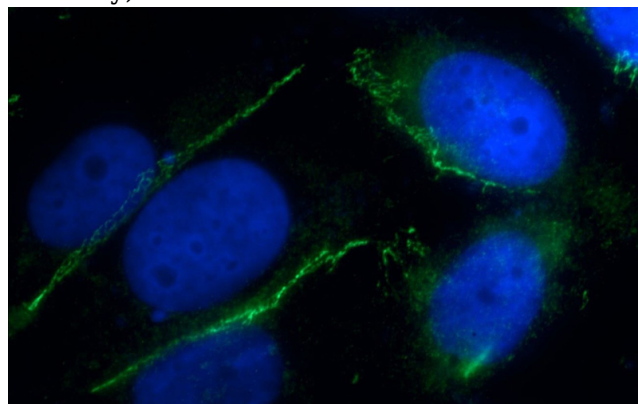
IHC: 1:20-1:200

IF: 1:20-1:200

Validations



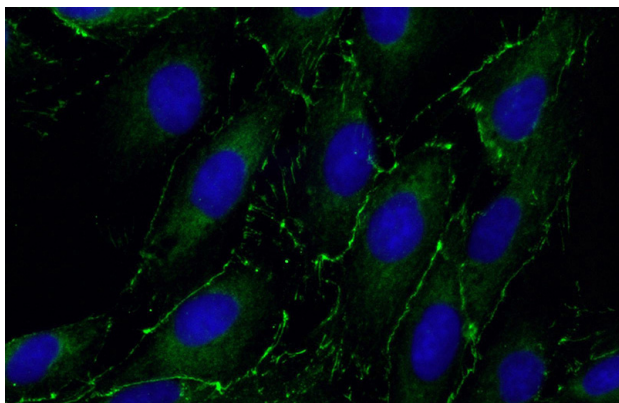
HepG2 cells were subjected to SDS PAGE followed by western blot with Catalog No:117259(ZO1 antibody) at dilution of 1:500



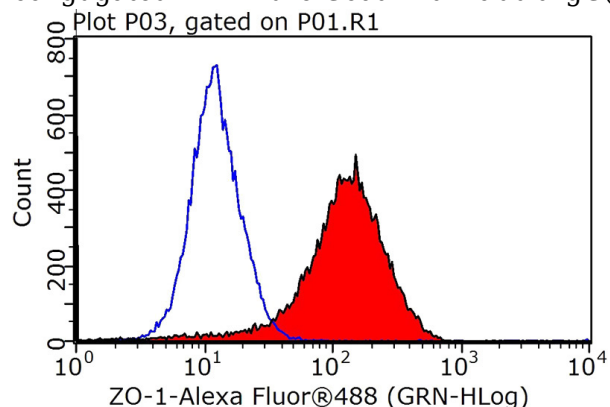
Immunofluorescent analysis of HUVEC cells using Catalog No:117259(ZO1 Antibody) at dilution of 1:50 and Alexa Fluor 488-conjugated AffiniPure Goat Anti-Rabbit IgG(H+L)

ZO-1 antibody

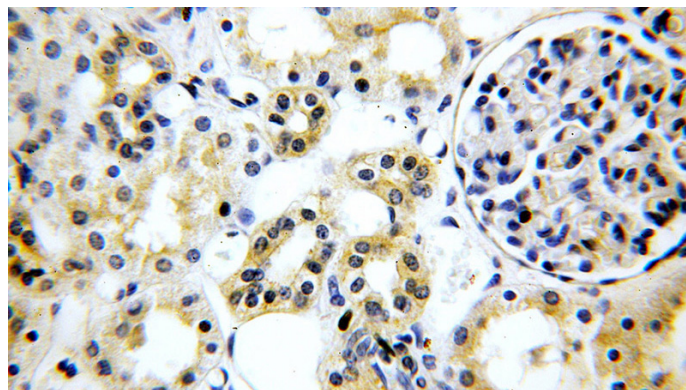
Catalog Number: 117259



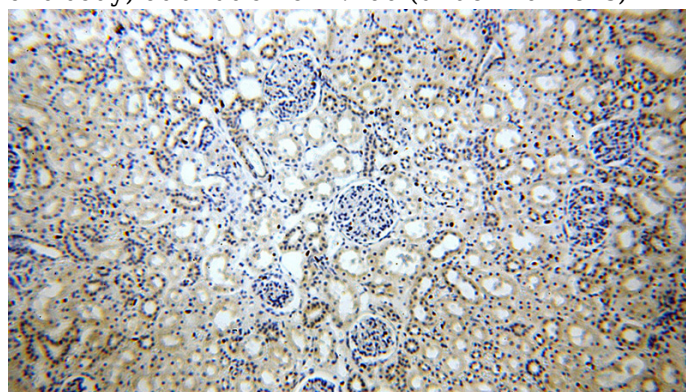
Immunofluorescent analysis of (-20oc Ethanol) fixed MDCK cells using Catalog No:117259(ZO1 Antibody) at dilution of 1:50 and Alexa Fluor 488-conjugated AffiniPure Goat Anti-Rabbit IgG(H+L)



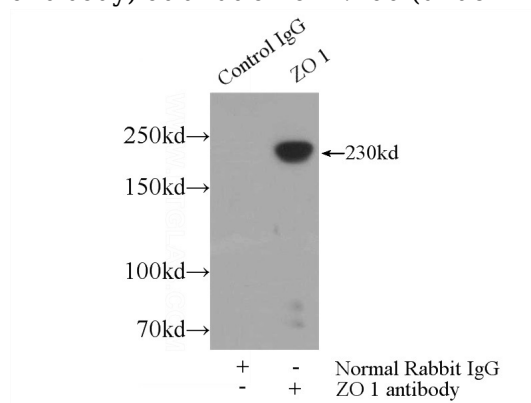
1X10⁶ MCF-7 cells were stained with 0.2ug ZO1 antibody (Catalog No:117259, red) and control antibody (blue). Fixed with 90% MeOH blocked with 3% BSA (30 min). Alexa Fluor 488-conjugated AffiniPure Goat Anti-Rabbit IgG(H+L) with dilution 1:1000.



Immunohistochemical of paraffin-embedded human kidney using Catalog No:117259(ZO1 antibody) at dilution of 1:100 (under 40x lens)



Immunohistochemical of paraffin-embedded human kidney using Catalog No:117259(ZO1 antibody) at dilution of 1:100 (under 10x lens)



IP Result of anti-ZO1 (IP:Catalog No:117259, 5ug; Detection:Catalog No:117259 1:800) with HEK-293 cells lysate 1800ug.