

MEK6 antibody

Catalog Number: 112649

Product name

MEK6 antibody

Specificity

Human, Mouse, Rat; other species not tested.

Antibody description

MEK6 Rabbit Polyclonal antibody. Positive IHC detected in human breast cancer tissue. Positive FC detected in MCF-7 cells. Positive WB detected in human kidney tissue. Observed molecular weight by Western-blot: 37kd

Preparation

This antibody was obtained by immunization of MEK6 recombinant protein (Accession Number: NM_002758). Purification method: Antigen affinity purified.

Formulation

PBS with 0.1% sodium azide and 50% glycerol pH 7.3.

Storage

Store at -20°C. DO NOT ALIQUOT

Clonality

Polyclonal

Ig Type

Rabbit IgG

Applications

ELISA, WB, IHC, FC

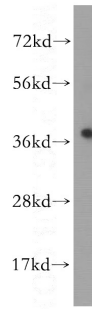
Dilutions

Recommended Dilution:

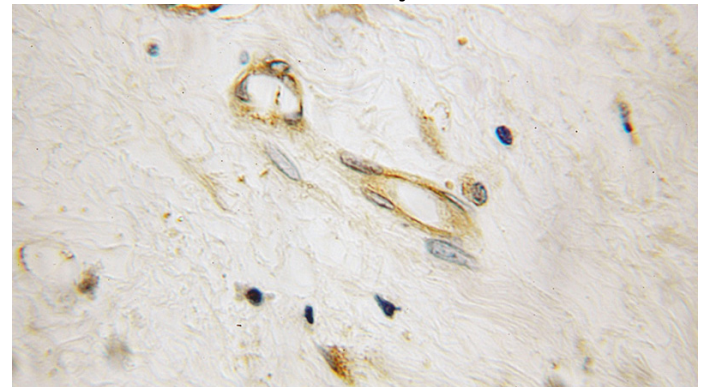
WB: 1:500-1:5000

IHC: 1:20-1:200

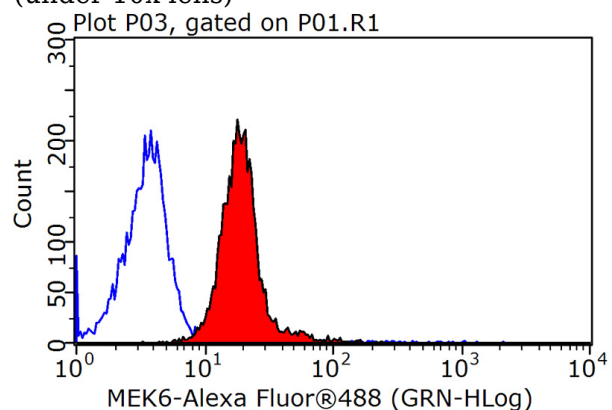
Validations



human kidney tissue were subjected to SDS PAGE followed by western blot with Catalog No:112649(MAP2K6 antibody) at dilution of 1:500



Immunohistochemical of paraffin-embedded human breast cancer using Catalog No:112649(MAP2K6 antibody) at dilution of 1:100 (under 10x lens)



1X10⁶ MCF-7 cells were stained with 0.2ug MAP2K6 antibody (Catalog No:112649, red) and control antibody (blue). Fixed with 90% MeOH

MEK6 antibody



Catalog Number: 112649

blocked with 3% BSA (30 min). Alexa Fluor 488-

conjugated AffiniPure Goat Anti-Rabbit IgG(H+L)
with dilution 1:1500.