

# BDH1 antibody



Catalog Number: 108439

## Product name

BDH1 antibody

## Immunogen

[Human BDH1 Recombinant protein \(GST tag & His tag\)](#)

## Specificity

Human, Mouse, Rat; other species not tested.

## Antibody description

BDH1 Rabbit Polyclonal antibody. Positive IP detected in mouse liver tissue. Positive WB detected in human liver tissue, human heart tissue, mouse liver tissue, rat brain tissue. Positive IHC detected in human liver tissue. Observed molecular weight by Western-blot: 31 kDa

## Preparation

This antibody was obtained by immunization of BDH1 recombinant protein (Accession Number: XM\_017007007). Purification method: Antigen affinity purified.

## Formulation

PBS with 0.02% sodium azide and 50% glycerol pH 7.3.

## Storage

Store at -20°C. DO NOT ALIQUOT

## Clonality

Polyclonal

## Ig Type

Rabbit IgG

## Applications

ELISA, WB, IHC, IP

## Dilutions

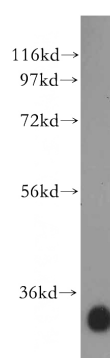
Recommended Dilution:

WB: 1:500-1:5000

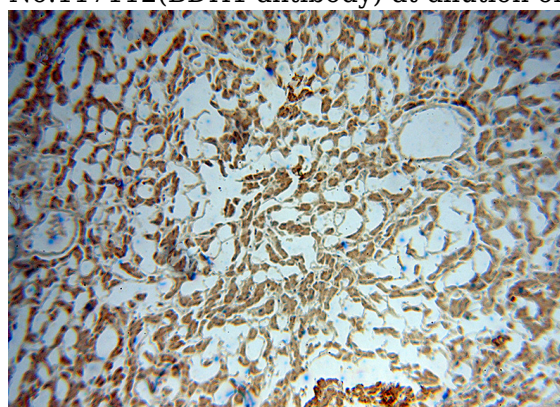
IP: 1:200-1:1000

IHC: 1:20-1:200

## Validations



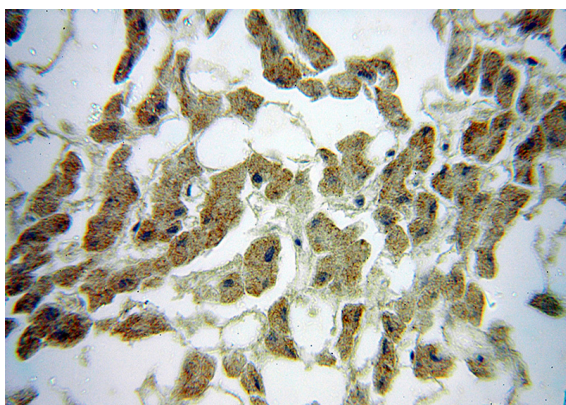
human liver tissue were subjected to SDS PAGE followed by western blot with Catalog No:117112(BDH1 antibody) at dilution of 1:500



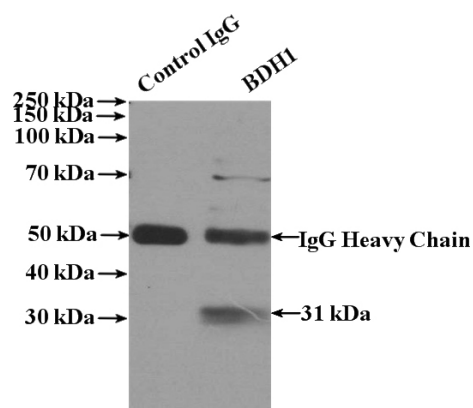
Immunohistochemical of paraffin-embedded human liver using Catalog No:117112(BDH1 antibody) at dilution of 1:50 (under 10x lens)

# BDH1 antibody

Catalog Number: 108439



Immunohistochemical of paraffin-embedded human liver using Catalog No:117112(BDH1 antibody) at dilution of 1:50 (under 40x lens)



IP Result of anti-BDH1 (IP:Catalog No:117112, 4ug; Detection:Catalog No:117112 1:300) with mouse liver tissue lysate 4000ug.