

Anti-REA Rabbit antibody



Catalog Number: 167439

Product name

Anti-REA Rabbit antibody

Specificity

Human, Mouse, Rat

Antibody description

REA Rabbit polyclonal antibody

Preparation

Antigen: A synthetic peptide of human REA

Formulation

Supplied in 50nM Tris-Glycine(pH 7.4), 0.15M NaCl, 40%Glycerol, 0.01% sodium azide and 0.05% BSA.

Storage

Store at -20°C. Stable for 12 months from date of receipt.

Clonality

Polyclonal

Ig Type

Rabbit IgG

Applications

WB, IHC-P, ICC/IF

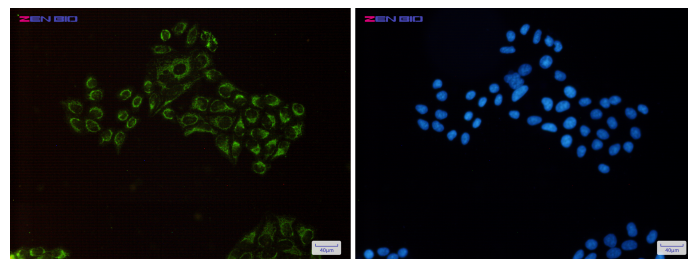
Dilutions

WB: 1/2000-1/10000

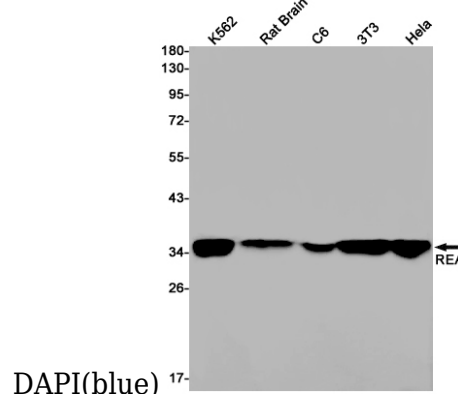
IHC: 1/50

ICC/IF: 1/50

Validations



Immunocytochemistry of REA(green) in HeLa cells using REA Rabbit pAb at dilution 1/50, and



Western blot detection of REA in K562, Rat Brain, C6, 3T3, HeLa cell lysates using REA Rabbit pAb(1:1000 diluted). Predicted band size: 33kDa. Observed band size: 33kDa.