

Anti-TAS2R39 antibody



Catalog Number: 176329

Product name

Polyclonal

Anti-TAS2R39 antibody

Ig Type

Rabbit IgG

Specificity

Human

Applications

WB, IF

Antibody description

Rabbit polyclonal antibody to TAS2R39

Dilutions

WB: 1:500-1:2000

IF: 1:100-1:500

Preparation

This antigen of this antibody was the antiserum was produced against synthesized peptide derived from human tas2r39. aa range:218-267

Validations

Formulation

Liquid, Liquid in PBS containing 50% glycerol, 0.5% BSA and 0.02% sodium azide.

Storage

Store at +4°C after thawing. Aliquot store at -20°C or -80°C. Avoid repeated freeze / thaw cycles.

Clonality

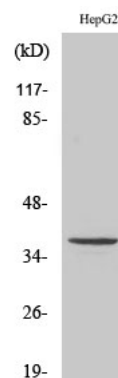


Fig1.; Western Blot analysis of various cells using T2R39 Polyclonal Antibody