

Anti-SA2 Rabbit antibody



Catalog Number: 167229

Product name

Anti-SA2 Rabbit antibody

Specificity

Human, Mouse, Rat

Antibody description

SA2 Rabbit polyclonal antibody

Preparation

Antigen: Recombinant protein of human SA2

Formulation

Supplied in 50nM Tris-Glycine(pH 7.4), 0.15M NaCl, 40%Glycerol, 0.01% sodium azide and 0.05% BSA.

Storage

Store at -20°C. Stable for 12 months from date of receipt.

Clonality

Polyclonal

Ig Type

Rabbit IgG

Applications

WB, IHC-P, ICC/IF, FC

Dilutions

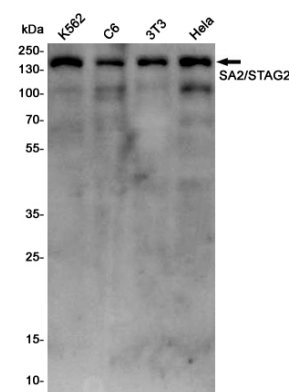
WB: 1/1000

IHC: 1/200

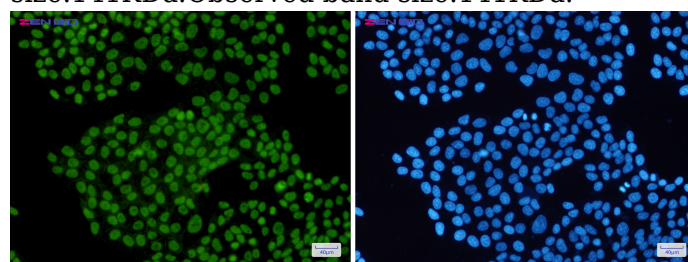
ICC/IF: 1/50

FC: 1/200

Validations



Western blot detection of SA2/STAG2 in K562, C6, 3T3, HeLa cell lysates using SA2/STAG2 Rabbit pAb(1:1000 diluted). Predicted band size: 141 kDa. Observed band size: 141 kDa.



Immunocytochemistry of SA2 (green) in HeLa cells using SA2 Rabbit pAb at dilution 1/50, and DAPI (blue)