

# CCNC Polyclonal Antibody



Catalog Number: 164929

## Product name

CCNC Polyclonal Antibody

## Specificity

Human, Mouse, Rat

## Antibody description

Polyclonal antibody to CCNC

## Preparation

Antigen: Recombinant fusion protein containing a sequence corresponding to amino acids 1-283 of human CCNC (NP\_005181.2).

## Formulation

PBS with 0.02% sodium azide, 50% glycerol, pH7.3.

## Storage

Store at -20°C. Avoid freeze / thaw cycles.

## Clonality

Polyclonal

## Ig Type

Rabbit IgG

## Applications

WB, IHC, IF

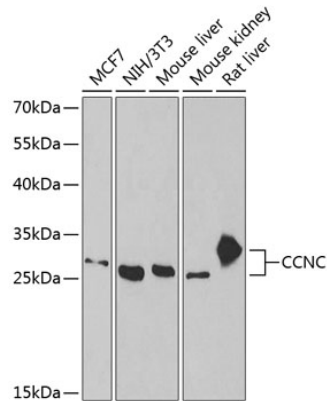
## Dilutions

WB 1:500 - 1:2000

IHC 1:50 - 1:200

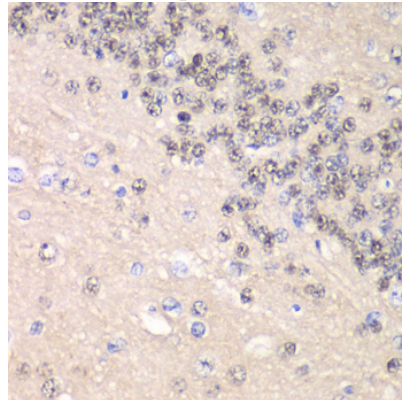
IF 1:10 - 1:100

## Validations



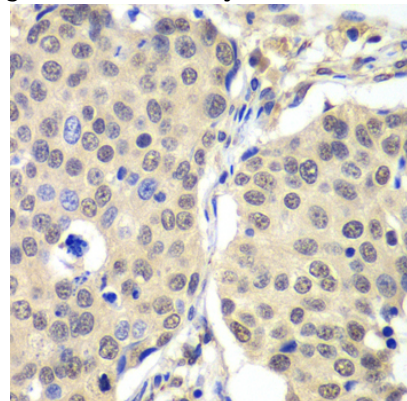
Western blot - CCNC Polyclonal Antibody

Western blot analysis of extracts of various cell lines, using CCNC antibody at 1:1000 dilution. Secondary antibody: HRP Goat Anti-Rabbit IgG (H+L) at 1:10000 dilution. Lysates/proteins: 25ug per lane. Blocking buffer: 3% nonfat dry milk in TBST. Detection: ECL Basic Kit. Exposure time: 60s.



Immunohistochemistry - CCNC Polyclonal Antibody

Immunohistochemistry of paraffin-embedded rat brain using CCNC antibody at dilution of 1:100



(40x lens).

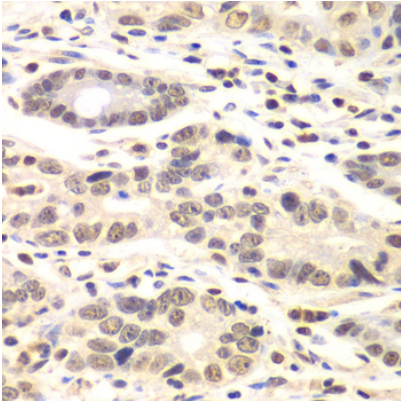
# CCNC Polyclonal Antibody

Catalog Number: 164929

---

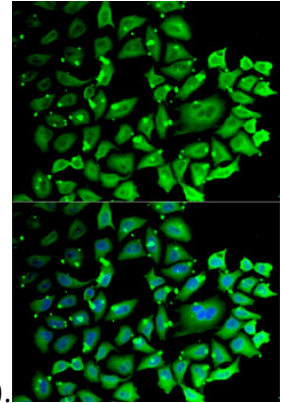
Immunohistochemistry - CCNC Polyclonal Antibody

Immunohistochemistry of paraffin-embedded human lung cancer using CCNC antibody at dilution of 1:100 (40x lens).



Immunohistochemistry - CCNC Polyclonal Antibody

Immunohistochemistry of paraffin-embedded human colon carcinoma using CCNC antibody at



dilution of 1:100 (40x lens).

Immunofluorescence - CCNC Polyclonal Antibody

Immunofluorescence analysis of MCF7 cells using CCNC antibody . Blue: DAPI for nuclear staining.