

Anti-IGF1 Receptor Rabbit antibody



Catalog Number: 167919

Product name

Anti-IGF1 Receptor Rabbit antibody

Specificity

Human

Antibody description

IGF1 Receptor Rabbit monoclonal antibody

Preparation

Antigen: Recombinant protein of human IGF1 Receptor

Formulation

50nM Tris-Glycine(pH 7.4), 0.15M NaCl, 40%Glycerol, 0.01% sodium azide and 0.05% BSA

Storage

Store at 4°C short term. Store at -20°C long term. Avoid freeze / thaw cycle.

Clonality

Monoclonal

Ig Type

Rabbit IgG

Applications

WB, ICC/IF, FC, IP

Dilutions

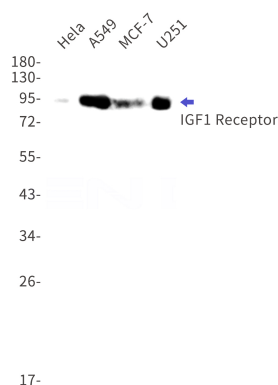
WB: 1/1000

ICC/IF: 1/20

FC: 1/50

IP: 1/20

Validations



Western blot detection of IGF1 Receptor in HeLa, A549, MCF-7, U251 cell lysates using IGF1 Receptor Rabbit mAb(1:1000 diluted). Predicted band size: 155kDa. Observed band size: 95kDa.