

Anti-ATPB Rabbit antibody



Catalog Number: 167519

Product name

Anti-ATPB Rabbit antibody

Specificity

Human, Mouse, Rat

Antibody description

ATPB Rabbit polyclonal antibody

Preparation

Antigen: A synthetic peptide of human ATPB

Formulation

Supplied in 50nM Tris-Glycine(pH 7.4), 0.15M NaCl, 40%Glycerol, 0.01% sodium azide and 0.05% BSA.

Storage

Store at -20°C. Stable for 12 months from date of receipt.

Clonality

Polyclonal

Ig Type

Rabbit IgG

Applications

WB, IHC-P, ICC/IF, IP

Dilutions

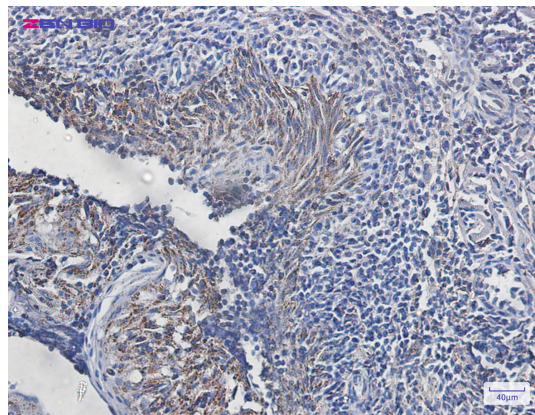
WB: 1/2000-1/10000

IHC: 1/20-1/100

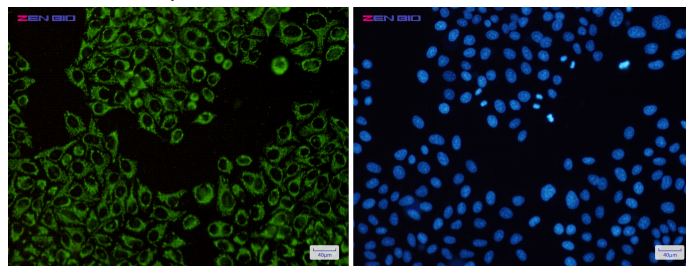
ICC/IF: 1/50

IP: 1/20-1/50

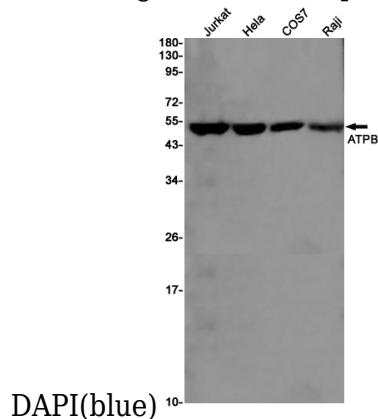
Validations



Immunohistochemistry of ATPB in paraffin-embedded Human tonsil using ATPB Rabbit pAb at dilution 1/20



Immunocytochemistry of ATPB(green) in HeLa cells using ATPB Rabbit pAb at dilution 1/50, and



Western blot detection of ATPB in Jurkat, HeLa, COS7, Raji cell lysates using ATPB Rabbit pAb(1:1000 diluted). Predicted band size: 57KDa. Observed band size: 52KDa.